



SurePoint

Spray Tender

SALES GUIDE



866-626-3670

www.surepointag.com

#surepointag



SUREPOINT AG Spray Tender Systems

SurePoint Ag's Spray Tender Systems give you maximum efficiency and safety!
Spray faster and with greater accuracy.

- Accuracy
- Sprayer Efficiency
- Eliminate Chemical Exposure
- Batch Calculation
- Labor Utilization
- Record Keeping



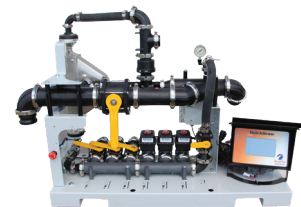
FULLY AUTOMATED

QuickDraw is a fully automated spray tender system. QuickDraw calculates the correct amount of each chemical in the batch.



SEMI-AUTOMATED

QuickDraw Lite is a manual or semi-automated spray tender system.



SAFE MANUAL MIXING

With ChemBlade ES, you put a full jug in and 15 seconds later, the lid opens and you remove an empty full cleaned jug - inside and out!



WHY INVEST in QuickDraw?

LESS TIME LOADING MEANS MORE TIME SPRAYING.

The SurePoint QuickDraw is a fully automated spray tender system. Manually calculating product amounts is a thing of the past! Simply enter acres or total gallons, sprayer application rate, and chemical rate per acre. QuickDraw then calculates the amount of each chemical in the batch, including manually added chemicals.



SPRAYER EFFICIENCY

Efficiency is the flagship benefit of the QuickDraw spray tender system. When your sprayer is sitting at the edge of the field, it is covering zero acres per hour. Minimizing fill time is critical so you can cover more acres per day while conditions are right.



ELIMINATE CHEMICAL EXPOSURE

It's that simple. QuickDraw and ChemBlade ES eliminate chemical exposure. Keep yourself safe and your employees safe!



ACCURACY

Mass Meter flow measurement technology, the most accurate available, combined with automated batch calculations ensure you get the correct amount of each chemical in every batch.



LABOR UTILIZATION

It's critical that every batch is mixed correctly. QuickDraw is the tool that enables your employees to get it right every time with fewer errors and less time loading.

Name	Rate	Order	Prod Volume	Total	Qty	Prod Error
Control Water	9.2 GFA			918.6 GAL		0.3 %
100% Para V-45 (Wettable)	32.00 L Oz/Ac	3	25.0 GAL	25.0 GAL		
Total NO PRODUCT	0.00 GAL/Ac	0	0.0 GAL	0.0 GAL		
Total Montazone	16.00 L Oz/Ac	4	12.5 GAL	12.5 GAL		
Total Para 74 Extra (Dry)	24.00 L Oz/Ac	5	18.8 GAL	18.8 GAL		
Total NO PRODUCT	0.00 GAL/Ac	0	0.0 GAL	0.0 GAL		
Total NO PRODUCT	0.00 GAL/Ac	0	0.0 GAL	0.0 GAL		
Total Para JMS	17.00 Bu/100	1	17.0 Bbs	17.0 GAL		
Total Para Montazone	4.00 L Oz/Ac	2	3.1 GAL	3.1 GAL		
Total Para Montazone PRO	2.00 L Oz/100	6	5.0 GAL	5.0 GAL		
Total Para NO PRODUCT	0.00 GAL/Ac	0	0.0 GAL	0.0 GAL		
Total Para NO PRODUCT	0.00 GAL/Ac	0	0.0 GAL	0.0 GAL		

BATCH CALCULATION

QuickDraw eliminates the need for manual calculations and potential errors. Simply enter acres or total gallons, sprayer application rate, and chemical rate per acre. QuickDraw calculates the amount of each chemical in the batch, including manually added chemicals.



RECORD KEEPING

QuickDraw records a record of every batch loaded. Date, time, grower, farm, field, machine, operator, as well as measured totals of each product in the batch are recorded.

QuickDraw Max

QuickDraw Max is a fully automated spray tender system. Start by creating a recipe, the applied application rates/acre for each chemical in the batch. Recipes are saved and used every time you load that mix of chemicals.



4

4-PRODUCT

Three (3) - 1" Port Valves
One (1) - 1 1/2" Port Valve



6

6-PRODUCT

Five (5) - 1" Port Valves
One (1) - 1 1/2" Port Valve
OR
Three (3) - 1" Port Valves
Three (3) - 1 1/2" Port Valves



9

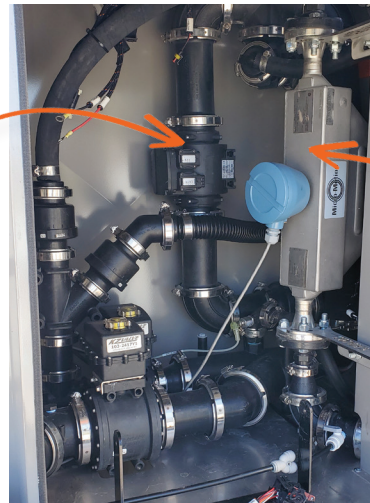
9-PRODUCT

Six (6) - 1" Port Valves
Three (3) - 1 1/2" Port Valves

Components of the QuickDraw System

The Most Accurate Flow Meter Available

The Micro-Motion mass flow sensor used in QuickDraw measures the mass flow (weight) and density of the product as it moves through the sensor. With those two measurements, it calculates the volume of any liquid with extreme accuracy, regardless of physical properties.



3" E-Mag Meter

Mass Flow Meter

Chemical Measurement

Mass Flow Meter Technology

Requires no calibration. The mass meter measures mass flow rate, density and liquid volume flow. As a result it is able to measure any liquid with extreme accuracy, regardless of physical properties, specifically density, viscosity, or conductivity.



Chemical/Product Control Values

Chemical products are controlled by CANBUS communication valves. Valves provide status communication to controller to ensure desired action. Alarms stop batch if desired action is not confirmed.



Carrier Measurement

3" E-Mag Flow Meter

All carrier, water or fertilizer, is measured with 3" electromagnetic flow-meter. Auto-calibration procedure calibrates 3" meter using the mass flow meter.

Mechanical/Turbine options available when using low-conductivity carrier solution(s). Necessary when using RO water.

TWO CONFIGURATIONS of the Spray Tender System

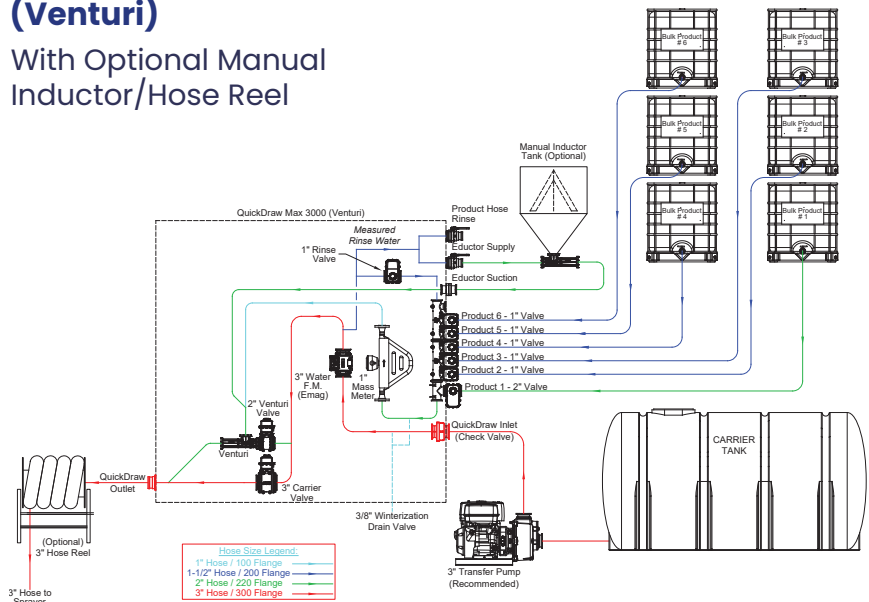
Venturi Suction

Transfer pump is located on the QuickDraw inlet. It pushes water across a venturi to create suction which draws chemical products through the mass meter and into the batch. With Venturi configuration, chemical does not go through the pump. This is the most common configuration used.

Maximum batch concentration 30% - Chemical.

6 Product QuickDraw 3000 Max (Venturi)

With Optional Manual Inductor/Hose Reel



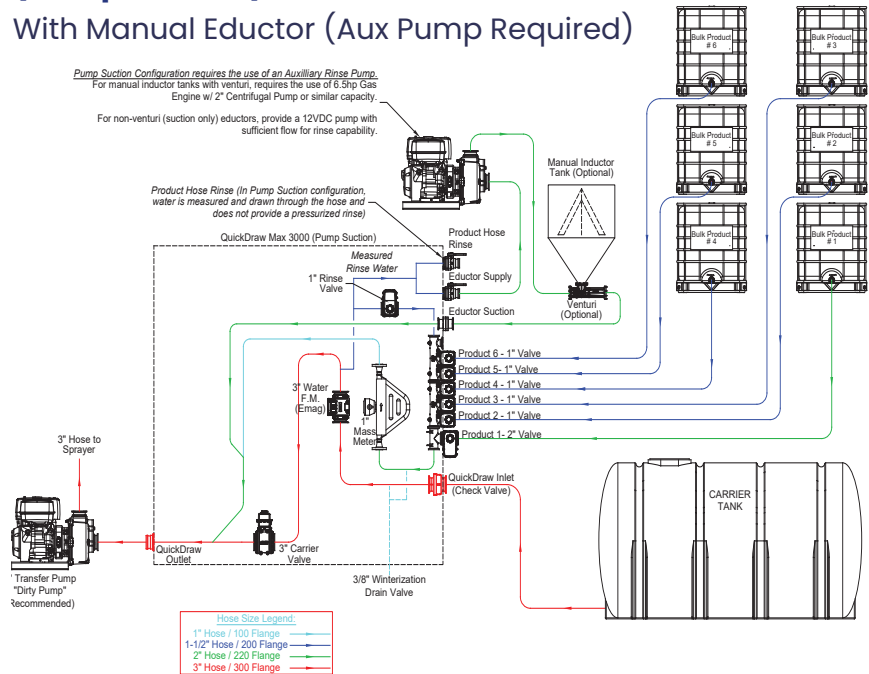
Pump Suction

Transfer pump is located on the QuickDraw outlet. Suction from the pump is utilized to draw water and chemical products through the mass meter and into the batch. Requires second pump to create pressurized water for rinsing jugs in manual eductor.

Maximum batch concentration 70% - Chemical.

6 Product QuickDraw 3000 Max (Pump Suction)

With Manual Eductor (Aux Pump Required)





FEATURES of the Spray Tender System

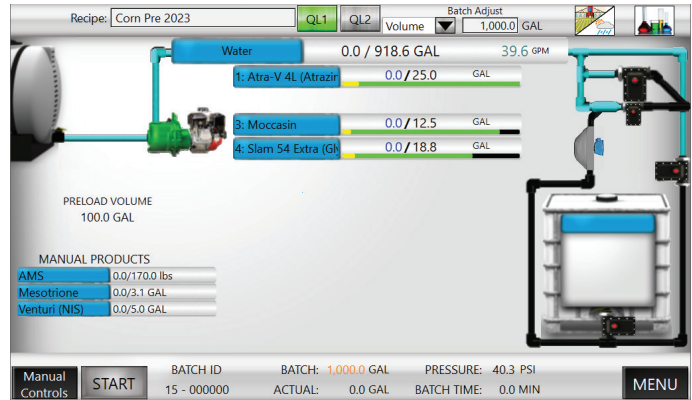
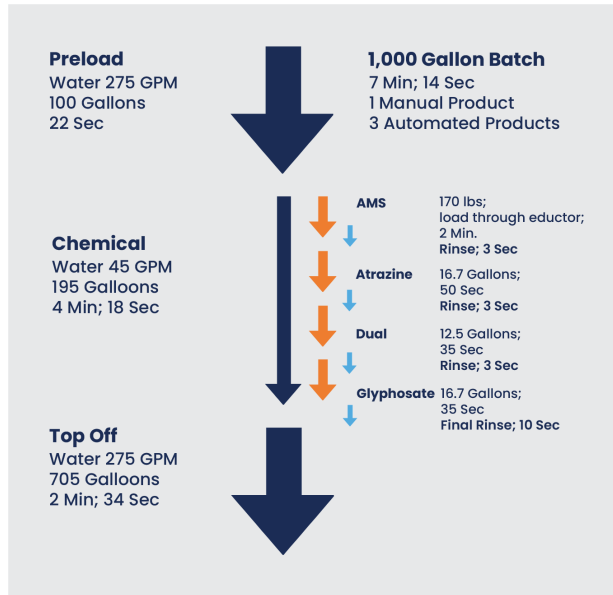
- RUN SCREEN & BATCHING CYCLE
- BATCH SETUP & CALCULATION SCREEN
- CONTAINER CALCULATION
- PRODUCT HOSE RINSE
- AUTO CALIBRATION OF CARRIER FLOWMETER
- RECORD KEEPING
- AUTOMATED PUMP START/STOP
- AIR PURGE
- CARRIER REFILL
- LANGUAGES
- IPAD APP

“ QuickDraw allows me to get an additional one or two loads sprayed every day. ”

- Lee Mueller, QuickDraw User

Features of QuickDraw

Run Screen & Batching Cycle



Run Screen

When batch setup is complete, utilize the run screen to start the batch, monitor batch progress, and enter manually measured products when added.

Batch Setup & Calculation Screen

Job Screen

Recipe

- Products
- Applied Rates/Acres
- Default Batch Size, Application Rate & Preload Volume

Automated Batch Calculation

Four Calculation Modes

- Volume & App Rate
- Area & App Rate
- Individual Volume
- Area & Carrier Rate

Name	Rate	Order	Prod Volume	Total	Inv.	Prod Rinse
Carrier: Water	9.2 GPA			918.6 GAL		3 Sec
Tote1: Atrazine	32.00 fl. Oz/Ac	3	25.0 GAL	25.0 GAL		Final Rinse 10 Sec
Tote2: NO PRODUCT	0.00 GAL/Ac	0	0.0 GAL	0.0 GAL		
Tote3: Moccasin	16.00 fl. Oz/Ac	4	12.5 GAL	12.5 GAL		
Tote4: Slam 54 Extra (Glyph)	24.00 fl. Oz/Ac	5	18.8 GAL	18.8 GAL		
Tote5: NO PRODUCT	0.00 GAL/Ac	0	0.0 GAL	0.0 GAL		
Tote6: NO PRODUCT	0.00 GAL/Ac	0	0.0 GAL	0.0 GAL		
Man. Prod1: AMS	17.00 lbs/100	1	170.0 lbs	17.0 GAL		
Man. Prod2: Mesotrione	4.00 fl. Oz/Ac	2	3.1 GAL	3.1 GAL		
Man. Prod3: Venturi (NIS)	2.00 Qt/100	6	5.0 GAL	5.0 GAL		
Man. Prod4: NO PRODUCT	0.00 GAL/Ac	0	0.0 GAL	0.0 GAL		
Man. Prod5: NO PRODUCT	0.00 GAL/Ac	0	0.0 GAL	0.0 GAL		

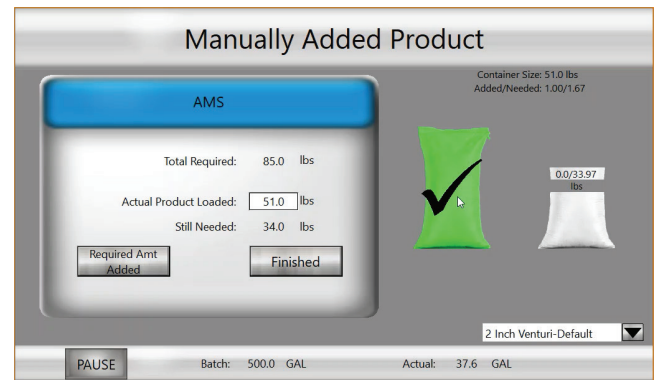
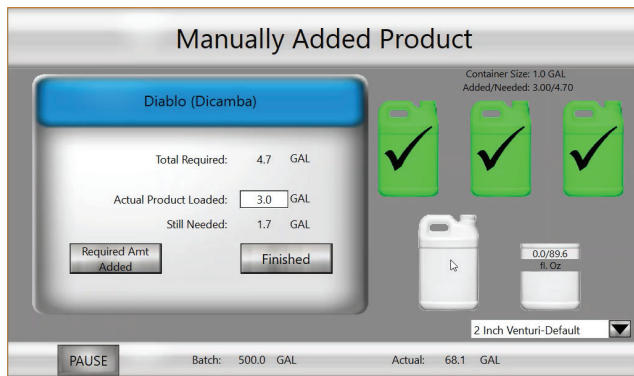
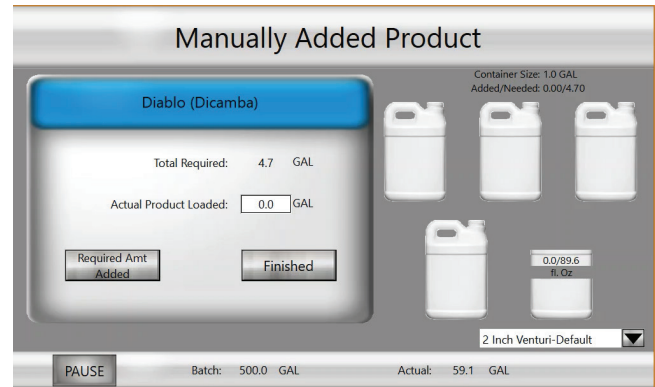
Name	Area & App Rate	Order	Prod Volume	Total	Inv.	Prod Rinse
Carrier: Water	9.2 GPA			918.6 GAL		3 Sec
Tote1: Atrazine	32.00 fl. Oz/Ac	3	25.0 GAL	25.0 GAL		Final Rinse 10 Sec
Tote2: NO PRODUCT	0.00 GAL/Ac	0	0.0 GAL	0.0 GAL		
Tote3: Moccasin	16.00 fl. Oz/Ac	4	12.5 GAL	12.5 GAL		
Tote4: Slam 54 Extra (Glyph)	24.00 fl. Oz/Ac	5	18.8 GAL	18.8 GAL		
Tote5: NO PRODUCT	0.00 GAL/Ac	0	0.0 GAL	0.0 GAL		
Tote6: NO PRODUCT	0.00 GAL/Ac	0	0.0 GAL	0.0 GAL		
Man. Prod1: AMS	17.00 lbs/100	1	170.0 lbs	17.0 GAL		
Man. Prod2: Mesotrione	4.00 fl. Oz/Ac	2	3.1 GAL	3.1 GAL		
Man. Prod3: Venturi (NIS)	2.00 Qt/100	6	5.0 GAL	5.0 GAL		
Man. Prod4: NO PRODUCT	0.00 GAL/Ac	0	0.0 GAL	0.0 GAL		
Man. Prod5: NO PRODUCT	0.00 GAL/Ac	0	0.0 GAL	0.0 GAL		



Features of QuickDraw

Container Calculation

QuickDraw shows operator how many jugs or bags are required and calculates the amount to be measured from partial container. Check off each container as emptied to ensure the correct amount is added to the batch.



Features of QuickDraw

Product Hose Rinse

Empty Chemical and Rinse Hose from Tote to QuickDraw.

Accurately Utilizes Chemical in Hose as Part of Target Amount

Length Units		Diameter Units			
Feet		Inches			
	Hose Length (Feet)	Hose Diameter (Inches)	Hose Volume (GAL)	Rinse Hose	
Tote1: Atra-V 4L (Atrazine)	11.5	2.0	1.87	<input checked="" type="checkbox"/>	
Tote2: NO PRODUCT	0.0	0.0	0.00	<input type="checkbox"/>	
Tote3: Moccasin	14.5	1.5	1.33	<input checked="" type="checkbox"/>	
Tote4: Slam 54 Extra (glyphosate)	0.0	0.0	0.00	<input type="checkbox"/>	
Tote5: NO PRODUCT	0.0	0.0	0.00	<input type="checkbox"/>	
Tote6: NO PRODUCT	0.0	0.0	0.00	<input type="checkbox"/>	

Enter the Hose Length and Diameter for each product. Click on the Rinse Hose button(s) to have the hose volume subtracted from what is batched, so it can be added during rinsing.

JOB RUN



Product Hose Rinse

NOTE: OPENING VALVES WILL PULL PRODUCT INTO THE BATCH. ENSURE YOU OPEN THE CORRECT VALVE. FOR THE FULL INSTRUCTION SET, CLICK ON THE HELP BUTTON.

	Set Point	Actual	Rinse Volume			
Arrow Valve 1 100%	16.7 GAL	16.7	10.7 GAL	NO PRODUCT Valve 4 0%	0.0 GAL	0.0 GAL
Bravo Valve 2 0%	13.5 GAL	13.4	0.0 GAL	NO PRODUCT Valve 5 0%	0.0 GAL	0.0 GAL
NO PRODUCT Valve 3 0%	0.0 GAL	0.0	0.0 GAL			

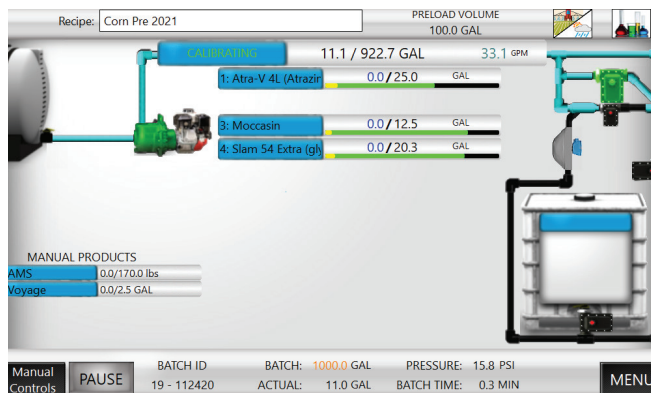
PAUSE Batch: 1000.0 GAL Actual: 227.4 GAL Finished

Features of QuickDraw

Auto Calibration of Carrier Flow Meter

Utilizes the Mass Meter to Calibrate 3" Carrier Flowmeter

QuickDraw utilizes a 3" E-Mag flowmeter to measure carrier solution. Utilize the Auto Calibration Cycle to fine-tune flowmeter accuracy. The auto cal. process cycles carrier through both flowmeters utilizing the mass meter flow reading to set the calibration of the carrier flowmeter.



Each carrier product (water, 32%, 28%, 10-34-0, etc) will have stored calibration value specific to that product.



Features of QuickDraw

Record Keeping

QuickDraw Keeps Records of Every Batch Mixed!

FIELD AND WEATHER SETTINGS			
Grower:	Wolters Farms	Field:	29-2-33
Farm:	Matt Wolters	Recipe:	29-1-33 Airport Corn Fertilizer
Operator:	William Johnson	Machine:	John Deere 4930
Crop:	Corn	Pest:	Winter Seeded Annuals
Temperature:	72.0 °F	Wind Dir/Speed:	E 9.0 MPH
		Boom Height:	30.0 Inches
<input type="button" value="Importing Fields from John Deere Operations Center?"/>		<input type="button" value="JOB"/>	<input type="button" value="RUN"/>
		<input type="button" value="MENU"/>	

Example of Record:

Batch ID: 004-04/17/20
Grower: Matt Wolters
Farm: Matt Wolters
Field: 29-2-33
Operator: Matt Wolters
Machine: Row Gator

Recipe: Corn pre-plant
Date/Time: 04-17-2020 18:07
Wind/Temp: 8.0MPH W 80.0 F
Status: Completed
Total: 998.8
Acres: 100.0

Product (EPA ID)	Rate		Total	
-Water ()			916.7	GAL
Atra-V 4L (atrazine) (89167-38-89391)	32.00	OZ/Acre	25.3	GAL
Tomahawk 5 (glyphosate 5.4 lb/gal) (33270-15)	26.00	OZ/Acre	20.2	GAL
T-Rex (dicamba) (87895-5-80967)	16.00	OZ/Acre	12.4	GAL
AMS ()	17.00	lbs/100	156.0	lbs
Undercover (mesotrione) (89168-54)	3.00	OZ/Acre	300.0	OZ
Varsity (flumioxazin) (89167-45-89391)	2.00	OZ/Acre dry	200.0	OZ
Venturi ()	2.00	Quarts/100	640.0	OZ



Features of QuickDraw

Automated Pump Start/Stop

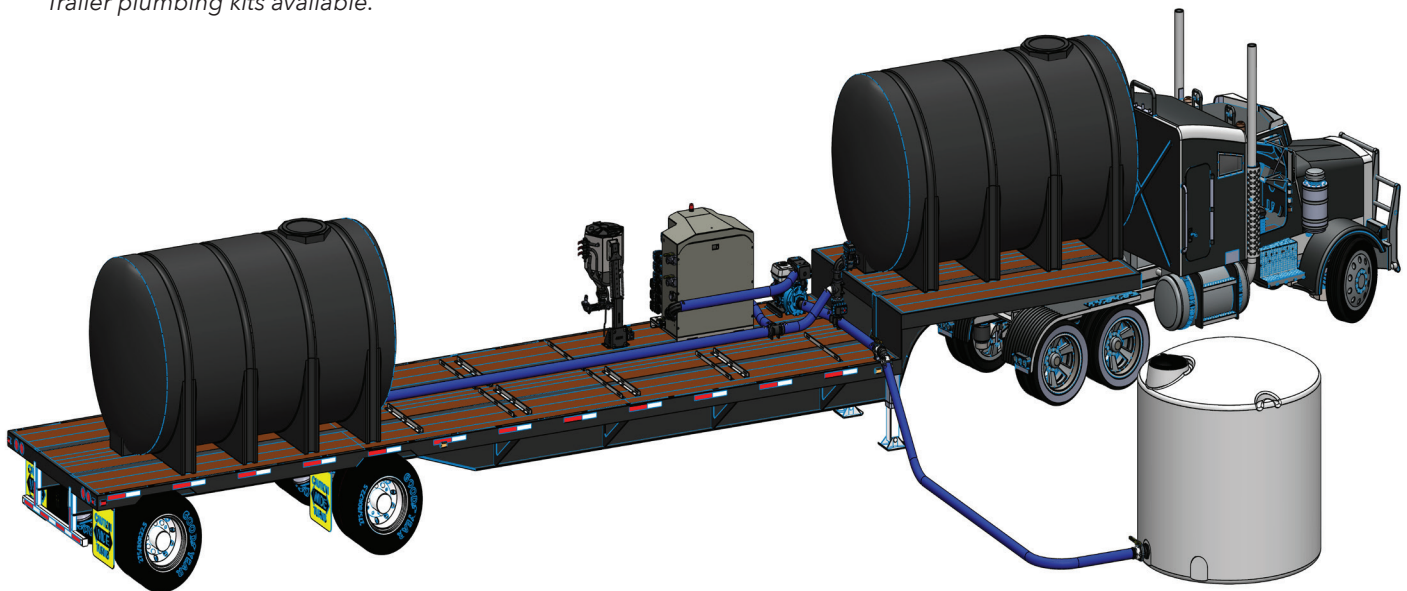
- QuickDraw provides start signal to start iGX Honda, AC Motors, Hydraulic Motors
- On "Batch Start" QuickDraw provides Start Signal
- iGX Engine has Automated Choke
- Start Batch and Pump from iPad App
- Two Speed Electronic Throttle (Controller with Toggle Switch Installed in QuickDraw)
- Connect QuickDraw stop output to most engine makes and models for automated engine kill when batch is complete



Carrier Refill

- Use QuickDraw and transfer pump on trailer to pull from ground storage tank and fill trailer tanks
- "Pre-Treat" water with AMS or water conditioner while filling trailer.
- Use "Carrier Fill Recipe" to set volume to load, QuickDraw automatically shuts valve and kills pump when set point is reached.

Trailer plumbing kits available.

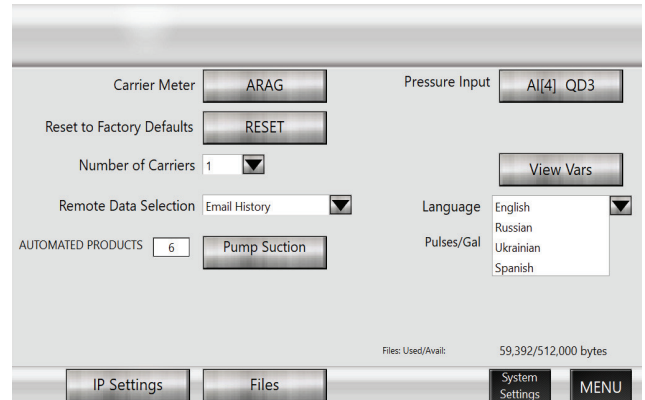


Features of QuickDraw

Languages

Four Languages Currently Available

- Spanish
- Russian
- Ukrainian
- English



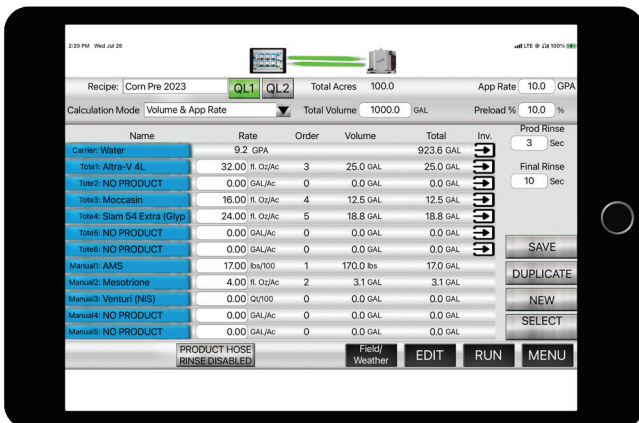
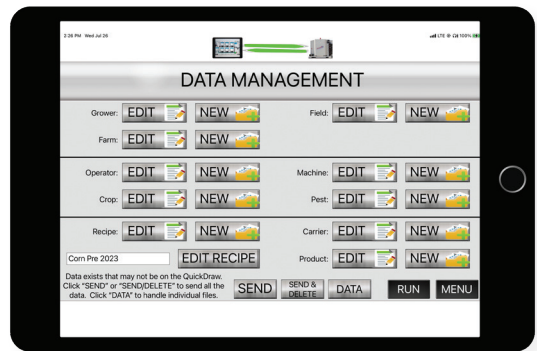
iPad App

Remote Operation Terminal

- Control all Batching Functions
- Monitor Batch Progress
- Execute Hose and Tote Rinse Remotely
- Manual Operate Any Valve

Create Recipes and Enter Record Keeping Inputs Offline

- Wirelessly Transmit to QuickDraw Controller
- Create Recipes on App and Transfer to QuickDraw
- Download Records From QuickDraw Controllers
- Filter, Sort and Create Reports



Carrier Blending & Fertilizer Blending

Utilize in a stationary plant setup or installed on a mobile tender or mixing trailer.



Carrier Blending

Use QuickDraw to blend up to four carrier products (water and/or fertilizers) with chemicals going into the sprayer. Commonly used on sprayer tender trailers.

App Rate 18.5 GPA
Volume 1,000.0 GAL

CARRIER SETUP

Carrier Calc Mode: Volume
PreLoad Vol: 25.0 GAL

Name	Load Order	Rate	Inv.	Use as Preload
Carrier 1: 32% UAN	4	648.6 GAL	<input checked="" type="checkbox"/>	<input checked="" type="checkbox"/>
Carrier 2: 10-34-0	3	216.2 GAL	<input type="checkbox"/>	<input type="checkbox"/>
Carrier 3: ATS	2	108.1 GAL	<input type="checkbox"/>	<input type="checkbox"/>
Carrier 4: Zinc 10% Chelate	1	27.1 GAL	<input type="checkbox"/>	<input type="checkbox"/>

Carrier in Recipe: 1000.0 GAL
Carrier Still Needed: 0.0 GAL

SAVE JOB RUN

Recipe: 29-1-33 Airport Corn Fertilizer
PRELOAD VOLUME: 25.0 GAL

32% UAN: 0.0/648.6 GAL
10-34-0: 0.0/216.2 GAL
ATS: 0.0/108.1 GAL
Zinc 10% Chelate: 0.0/27.1 GAL

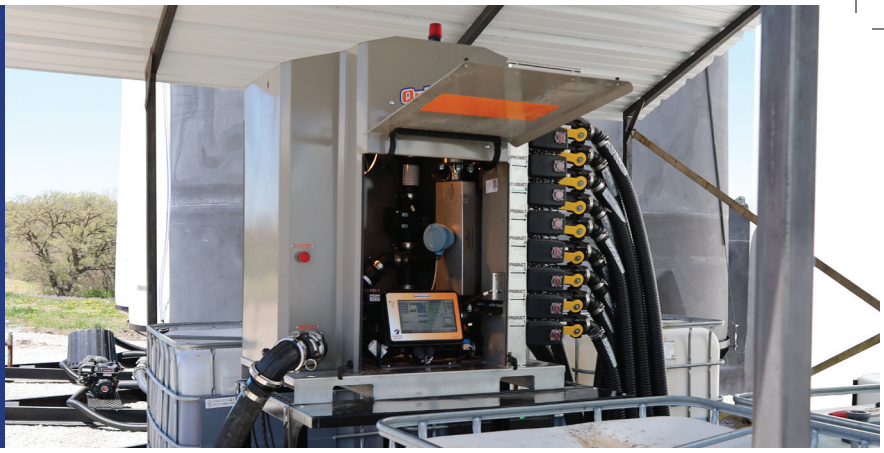
MULTIPLE: 0.0 / 1,000.0 GAL 46.7 GPM

Manual Controls START BATCH ID: 27 - 000000 BATCH: 1000.0 GAL ACTUAL: 0.0 GAL PRESSURE: 15.7 PSI BATCH TIME: 0.0 MIN MENU

Carrier Blending on the Farm

Use QuickDraw spray tender trailer to blend fertilizer applied with planter. Have bulk semi-loads of fertilizer delivered direct to farm. Use totes of micro-nutrients, biologicals and other treatments. Create recipes for each field based on soil test and agronomic goals. Eliminate the logistical challenges of getting the correct blend for each field from your retail fertilizer supplier.





Fertilizer Blending

Configuration of QuickDraw for mixing fertilizer blends.

Typically Used in Stationary or Plant Installations for On-Farm Mixing.

- Mix up to 4 Products using 3" or 4" valves on high-capacity side of QuickDraw, with up to 9 products using 1 1/2" valves on low-capacity side.
- Pump Suction Configuration
- 2" Mass Meter



Use Carrier Flow Meter Auto Calibration process to set calibration for different products being blended.





ACCESSORIES For Your Spray Tender System

Build your QuickDraw into a complete mixing trailer/station. Use existing components or complete your mixing station with QuickDraw Accessories.

- **Stainless Steel Eductors (20 Gallon)**
 - **Product/Chemical Connection Kits**
 - **iGX Honda Engine with 3" JOHNBLUE**
- **Air Purge**
 - **ChemCaddy**
 - **Bulk Blaster**

Accessories

Stainless Steel Eductors

Options

- 20 Gallon Stainless Steel Tank
- With or Without ChemBlade Original Jug Knife
- Swing Down Parallel Linkage or Stand Mount Configurations

Features

- Empty and Rinse Jugs Quickly
- Auxiliary rinse head to rinse non-cut jugs
- Incorporate AMS quickly (2 bags per min)
- Eliminate climbing on trailer with Swing Down Option



Swing Down

Stand Mount



ChemBlade Original

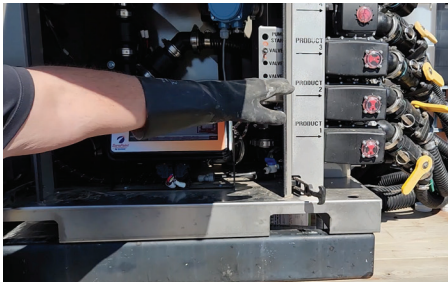


Accessories

Product/Chemical Connection Kits

Connection kits from QuickDraw product valves to totes.

- Male & Female coupler with valve at QuickDraw.
- Plumbing coupler to connect at tote.
- Available for 1 ½" and 2" hose.



iGX Honda Engine with 3" JOHNBLUE

- QuickDraw provides start signal to start iGX Honda, AC Motors, Hydraulic Motors
- On "Batch Start" QuickDraw Provides Start Signal
- iGX Engine has Automated Choke
- Start Batch and Pump from iPad App
- Two Speed Electronic Throttle (Controller with Toggle Switch Installed in QuickDraw)

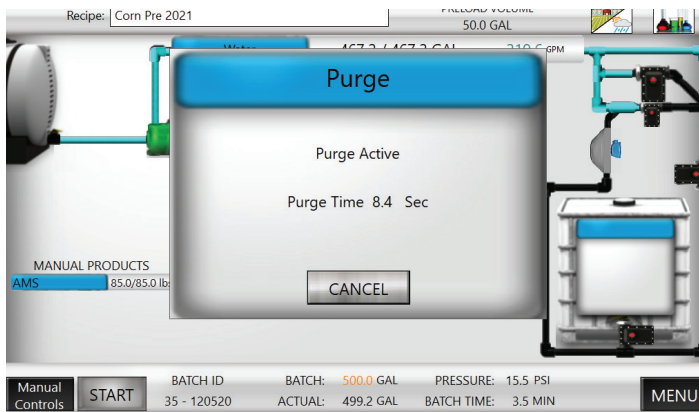


Accessories

Air Purge

Enable optional accessory by installing air purge regulator and valve kit.

When batch is complete, valve opens for set amount of time (sec).



Chem Caddy

Measure Partial-Jug Amounts Accurately and Safely.

Equipped standard with flip-top lid for pouring jugs.

Configurations:

- Swing Down Parallel Linkage or Stand Mount
- For use with QuickDraw
- With 2" or 3" Bypass Assembly



Optionally, available with EasyFlow closed transfer system. EasyFlow allows operator to transfer product without being directly exposed to chemical.

Bulk Blaster

Rinse totes when you empty them. QuickDraw has a rinse cycle functions specifically designed to work with Bulk Blaster to quickly rinse totes at the time you empty them.



CHEM-BLADE[®] ES ENCLOSED SYSTEM

The concept is simple, but the result is profound. When using traditional methods for opening, dumping, and rinsing, it is nearly impossible to avoid splattering chemical and rinsate. But with ChemBlade ES, you can put a full jug in, and 15 seconds later the lid opens and you remove an empty, fully cleaned jug - inside and out!



CHEM-BLADE[®]

ChemBlade ES can be used as a stand alone mixing system or integrated with QuickDraw Max or Lite.

Empties and Rinses Chemical Jugs with Zero Exposure to the Operator!

Four Easy Steps:

1. Load a Full Jug of Chemical
2. Press Button to Start
3. Wait 15 Seconds
4. Remove the Clean Jug



QuickDraw

SPRAY TENDER SYSTEM

LITE

QuickDraw Lite provides mass flow or oval gear meter measurement of chemicals with refined features and operation. QuickDraw Lite is a manual or semi-automated spray tender system. In semi-automated operation enter the desired chemical amount, press start. When the set point is reached, the product valve automatically closes. In manual operation, simply open a product valve and watch the display until the desired chemical amount has been measured into the sprayer. Then close the product valve.



Meter Options



Mass Meter



Oval Gear Meter Chemical Measurement



QuickDraw Lite Models	Meter		Configuration		Optional
	Gear Meter	Mass Meter	Venturi	Pump Suction	Carrier Flow Meter
6 Manual Valves	X	X	X	X	X
3 Automatic / 3 Manual Valves	X	X	X	X	X
6 Automatic Valves	X	X	X	X	X

Examples of Spray Trailers



Examples of Plant / Stationary Installations



Examples for High Value / Specialty Crops





Stronger Together.

9904 Hwy 25, Atwood, KS 67730
www.SurePointAg.com

FAMOUS FOR INNOVATION AND FARM-TO-FARM CUSTOMIZATION.

SurePoint Ag has been a leader in ag tech for over fifteen years. Our Spray Tender product line has continually expanded with advanced features and reliability that is second-to-none. Ask your dealer about the added efficiency, safety, and profitability that comes from automating your mixing and loading processes with QuickDraw and our other suite of spray tender products.

Learn More or Find a Dealer: www.surepointag.com

© 2023 by SurePoint Ag Systems, Inc. SurePoint Ag Systems, Inc. reserves the right to make changes in engineering, design, and specifications, or add improvements at any time without notice or obligation. Part Number: 394-6305Y1



Visit SurePoint Ag on YouTube for In-Depth Instructional Videos on Features and Operating System for QuickDraw.

