

Support Bulletin-SB-24-10018
Date-9.16.2024
Title: PWM to Servo Module Updated Setting
Product Line: NH3
Model: Sentinel
Level: Public
Author(s): Bo Downing
Revision Letter: N/A



Overview: This is to help identify the correct setting that we need for the 208-06-5566Y2 PWM to Servo Module compared to the Y1 Version settings.

Links to Supporting Info:

Solution:

Here is how to identify the module that you have. This is for any module that has been built since August 1st 2024.



208-06-5566Y2 module that works on 1.5.0 and newer software (needs control type Rate Servo): Processor flashes twice and a pause over 1.5 sec

Ctrl Mode: Rate Servo

Ctrl Speed: 350

PWM Max: 70 (not to exceed 97)

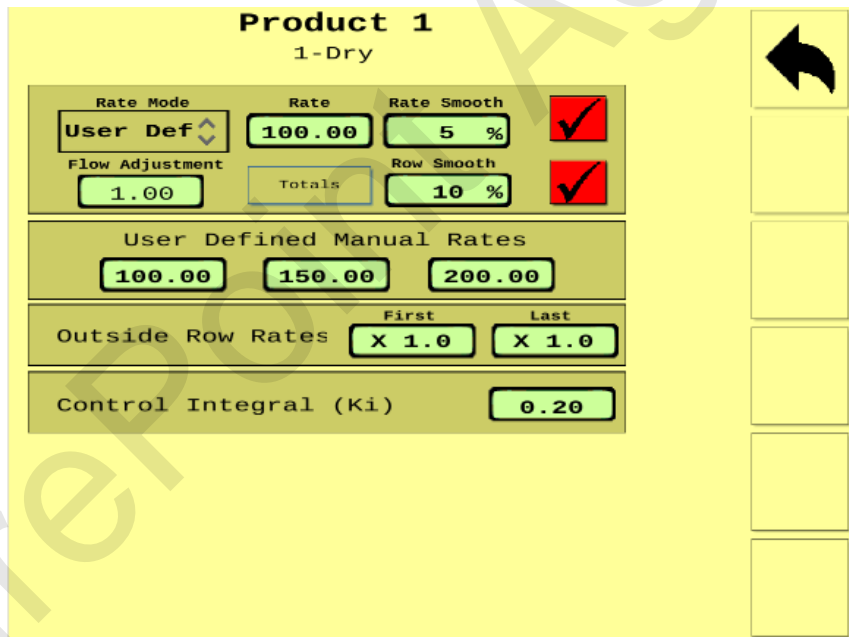
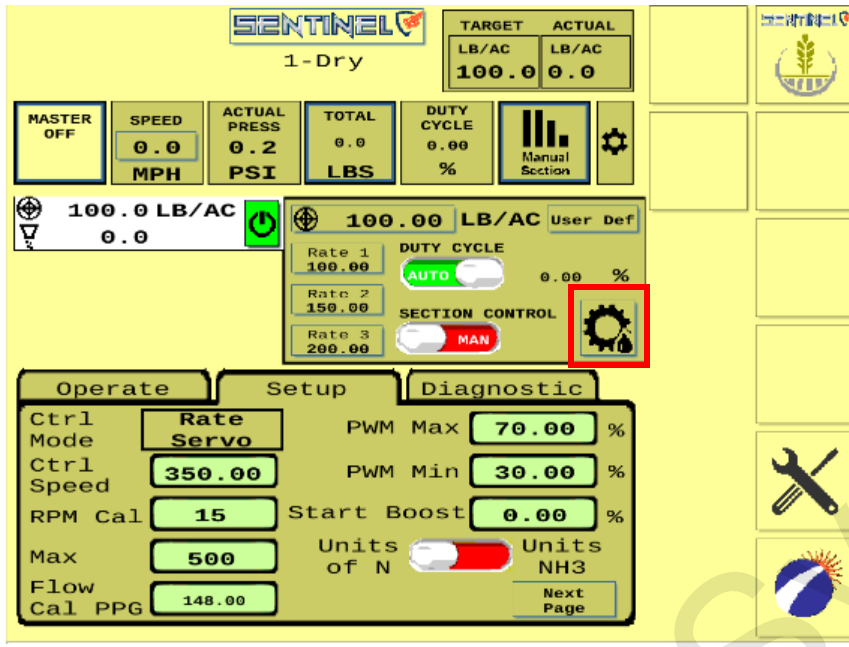
PWM Min: 30

Start Boost: 0

Navigate to the Rate Setup Page by touching the icon in the red box,

Rate Smooth: 5%

Control Integral (ki): 0.2



208-06-5566Y1 module that was used on 1.4.x versions of software (needs control type Rate PWM): Processor flashes evenly 5 times per second

Ctrl Mode: PWM

Ctrl Speed: 300

PWM Max: 97

PWM Min: 4

Start Boost: 50

Navigate to the Rate Setup Page by touching the icon in the red box (left image) Set-

Rate Smooth: 5%

Control Integral (ki): 0.1

Thanks for your continued business with SurePoint Ag Systems.

If you have any questions, please contact our office at 866-626-3670

SurePoint Ag Systems