

**Support Bulletin-SB-24-10014A**  
**Date-4.24.2024**  
**Title: QuickDraw 3000 Critical Software Update**  
**Product Line: Spray Tender**  
**Model: QuickDraw 3000**  
**Level: Public**  
**Author(s): Andy Boyle**  
**Revision Letter: A**



**Overview:** Software update includes fix for potential measurement accuracy error as well new feature enhancements.

New QuickDraw 3000 Controller Firmware Rev: 2.4.7 and Display Software Rev: 3.4.7. features include:

- Fixes bug that can result in dispensing the incorrect volume of a product. *All previous QuickDraw 3000 software versions, could potentially present this problem.*
- QuickDraw 3000 units manufactured between November 1st 2023 and April 9th 2024 utilizing a 1" KZ Valves with actuator part number 104-3614Y1 may display a "Product Valve 'X' Failed to Close" Alarm when the valve is physically closed. (For additional information reference Support Bulletin SB-24-10012)
- Improved Valve Diagnostics by Adding Valve descriptions to CAN BUS Failure Alarms
- Ability to save Individual Volume Recipes
- Partial Batch saving to allow a user to Resume a Batch that was Terminated before completion
  - Tapping the black icon (Image 1) turns icon green and adjusts the batch size to remaining amount
- Ability for customers to choose Polmac 3" Turbine meter in Carrier Meter selection. (Image 2)
- Additional feature enhancements

**Links to Supporting Info:**

- [QuickDraw Software Updates](#)
- [QD3000 - Installing Software Updates](#)
- [SB-24-10012 QuickDraw 3000 Actuator Incorrectly Reporting Product Valve X Failed to Close 04.11.2024](#)

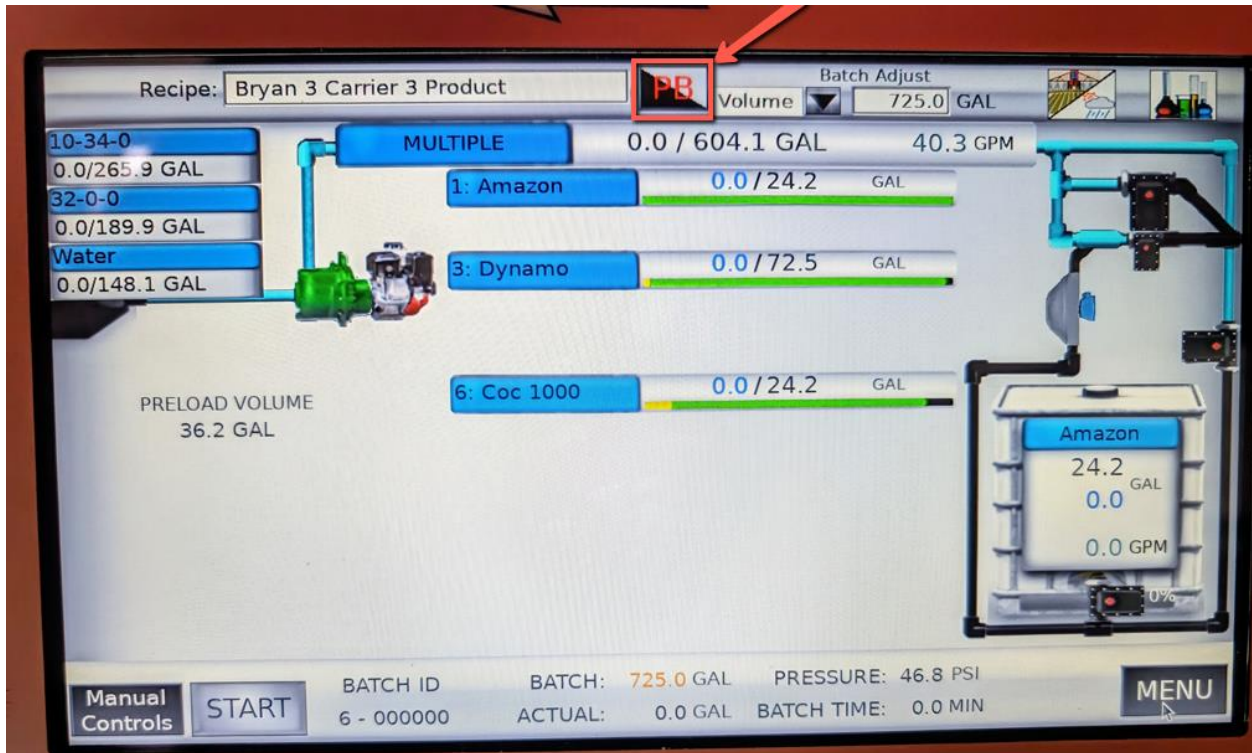


Image 1

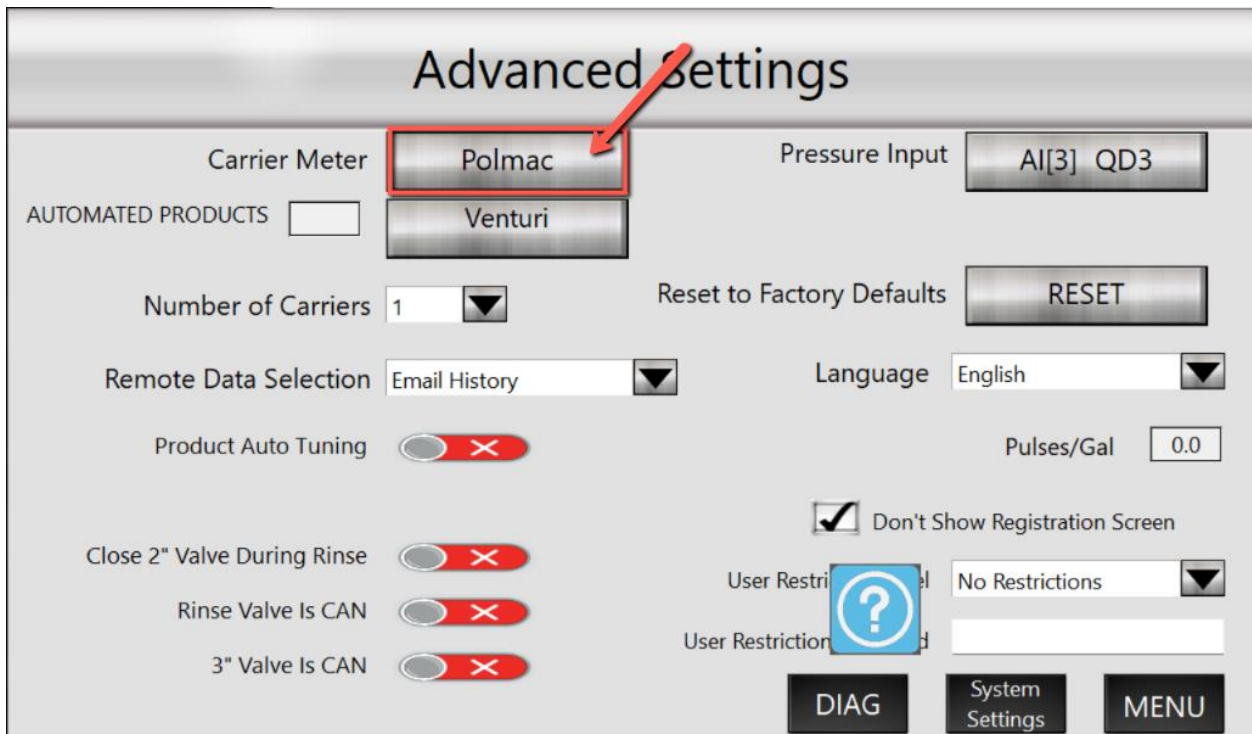


Image 2

