

Technical Bulletin: Keeton Install on 2013 Kinze Planters

February 25, 2013



Notice: On all 2013 Kinze planters, Kinze has changed to their larger seed tube. This is the same seed tube that was previously used on the Kinze EdgeVac planters.

The Keeton Universal Mounting bracket will not fit around the larger seed tube.

To fit a Keeton Seed Firmer with this seed tube, use the Kinze Mounting Bracket instead of the Universal Mounting Bracket.

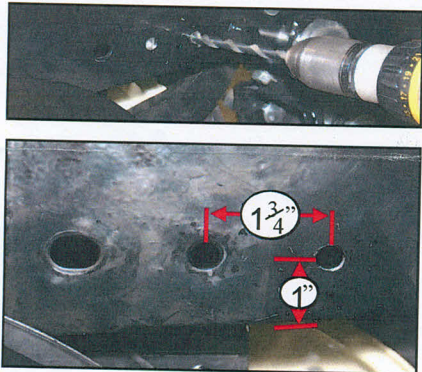
There will also need to be a 3/8 hole drilled in the row unit as shown below.

If WaveVision or Bullseye Seed Tubes are being installed in place of the large Kinze seed tubes, the Universal mounting bracket can still be used.

Part #'s for the Kinze mounting brackets are:

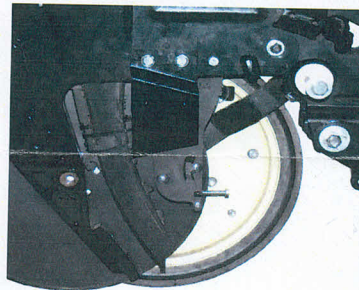
- 125013 Kinze Bracket with Dry Firmer
- 115012 Kinze Bracket with Dual Tube Firmer
- 126009 Kinze Bracket with Short Low Profile Firmer
- 150035 Kinze Bracket with Hardware

Kinze Large Seed Tube Installation Instructions



Step 1

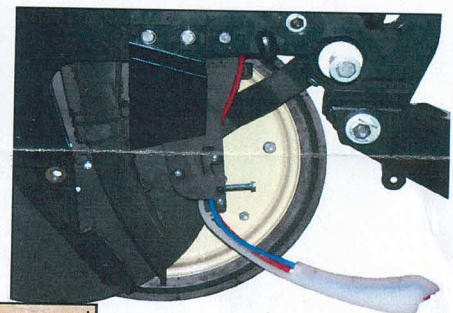
Start with step 1 & 2 above. Drill a 3/8 hole behind the original scraper hole on both sides. Position the hole 1 3/4" back from rear scraper



Step 2

Slide the bracket assembly up inside the row unit frame. Align the top two holes of the bracket with the back hole of the scraper and the newly

If assembly is too wide to fit between sides of shank remove one 1/8" metal spacer or replace with thin washers.



Step 3

Position the scrapers over the original holes on the outside of the planter frame. Secure scrapers, firmer bracket, and planter frame together using the 3/8" x 2 1/2" carriage bolts. Tighten firmly.