



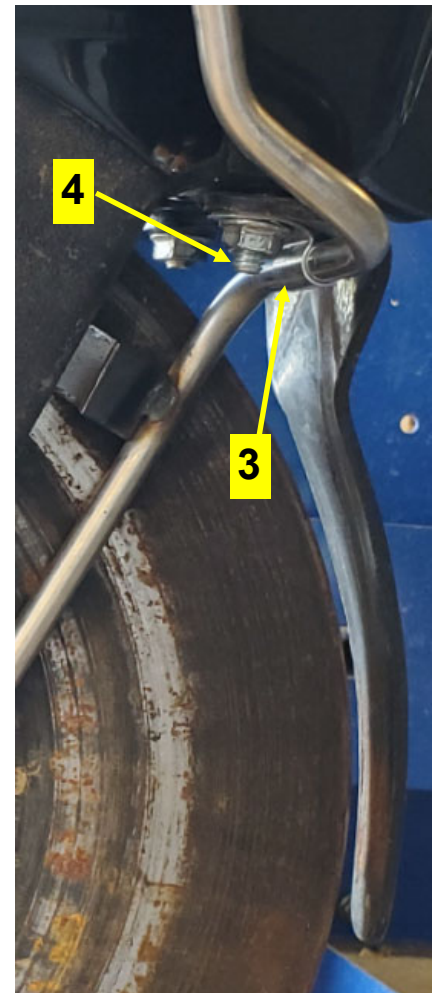
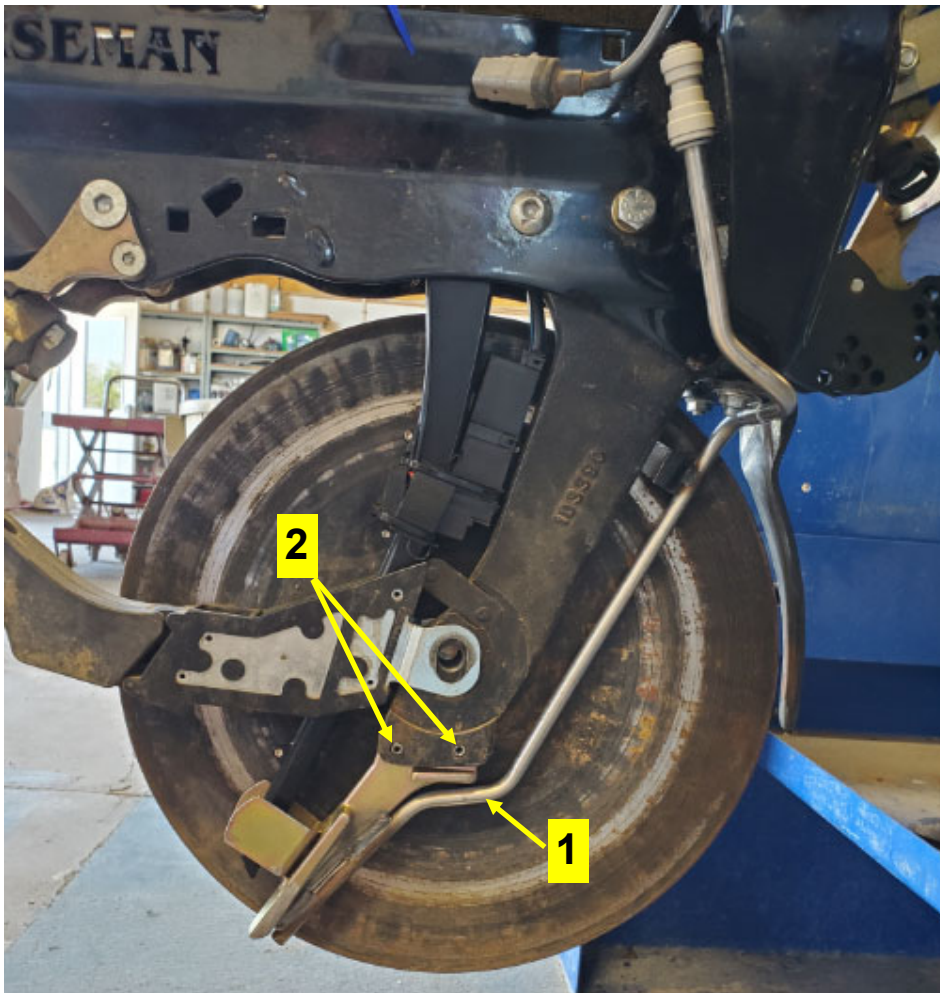
396-4423Y1

Norseman Techni-Plant FL Planter In-Furrow Fertilizer Tube Installation Instructions

Kit Number: 270-TT-001-NORSEMAN

Parts List

| ITEM NO. | PART NUMBER | DESCRIPTION | QTY. |
|----------|--------------|---|------|
| 1 | 274-TT-001 | TUBE ONLY - Totally Tubular - 2000 Series Kinze Planter and 7000 or 7100 Series John Deere, Norseman Techni-Plant | 1 |
| 2 | 269-025088RP | 1/4" OD x 7/8" Roll Pin | 2 |
| 3 | 352-8863T34 | Loop Clamp - 3/8" ID, 1.5" Long, 13/32" Mount Hole DIA | 1 |
| 4 | 304-050100-5 | Carriage Bolt - 5/16" x 1" G5 | 1 |





Installation Instructions

KIT: 270-TT-001-NORSEMAN

Installation Instructions:

1. Remove depth gauge wheels and disc's, taking note of shim placement.
2. Remove factory seed tube guard, remove disc guard bolt on the right side of the row unit (standing behind)
3. Lift TT-001 up into position on row unit
4. Align roll pin holes and install roll pins (Included in Kit)
5. Install Loop Clamp using the right bolt hole of the disc guard with the supplied 5/16"x1" Carriage Bolt. See picture to the below right for clamp orientation.
6. Re-Install seed tube
7. Re-Install disc openers taking care to get the correct shim placement. Extra shims may be needed after installing TT-001. Refer to Planter MFR disc opener installation recommendations.
8. Re-Install depth gauge wheels

