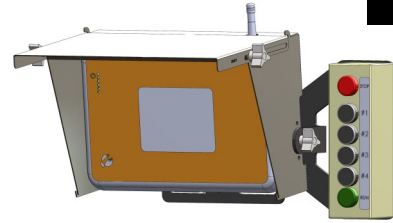
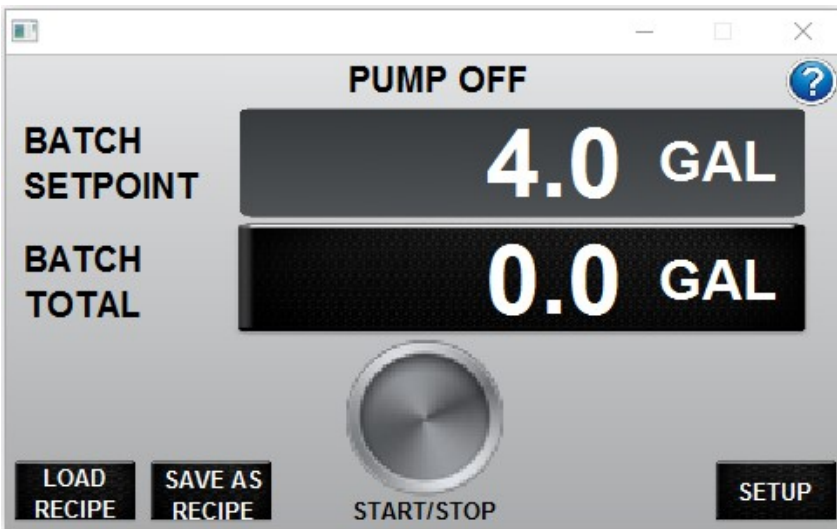


High Pressure Fixed Rate SureBatch Controller Quick Start Card 396-3263Y1



RUN Screen—AUTO Mode



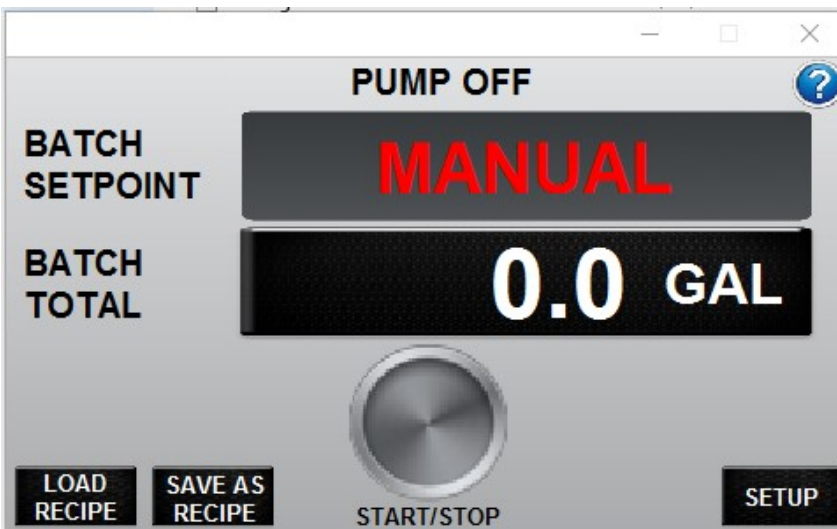
The BATCH SETPOINT and BATCH TOTAL are shown on the RUN Screen.

The Batch Setpoint shows what Batch Volume it will pump when the start button is pushed.

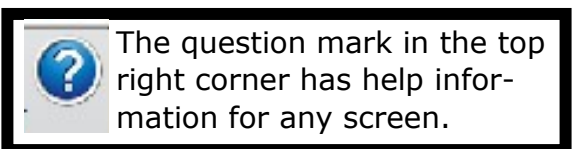
The Batch Total is the amount of product that has been pumped.

The controller shown to the left is currently not running (Pump Off & Current Batch Total 0.0 GPM). The Batch Setpoint is set for 4.0 GAL; when the start button is pressed, 4.0 gallons will be dispensed.

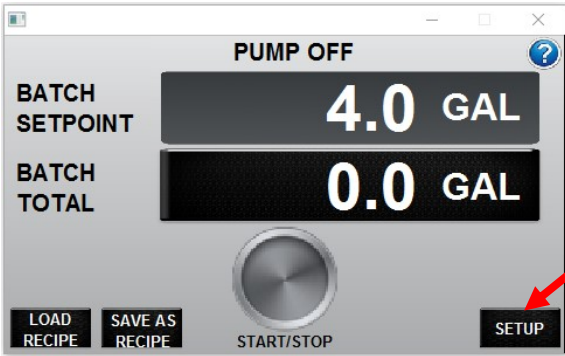
RUN Screen—MANUAL Mode



When the MANUAL/AUTO switch is in the Manual position (Switch is located on the Operational Settings Screen in the Setup Tab), the pump can be started and will run until stop is pushed. **In Manual operation there is no automatic batching.**

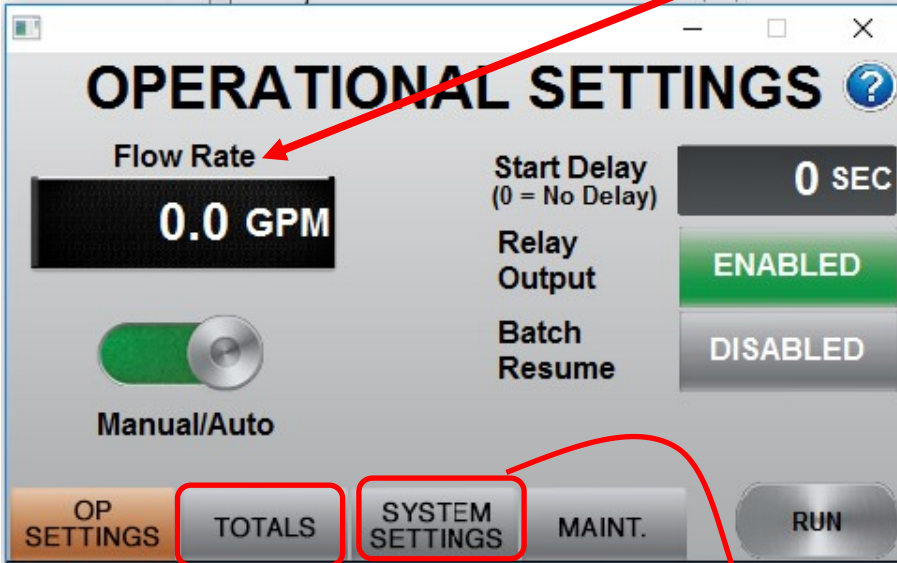


OPERATIONAL SETTINGS Screen



To navigate to the operational settings screen, press the SETUP button on the RUN screen.

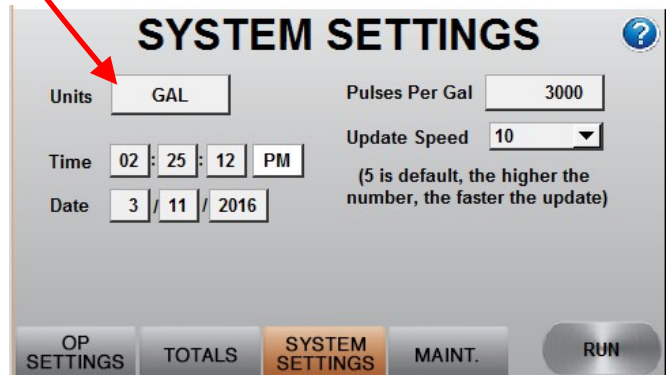
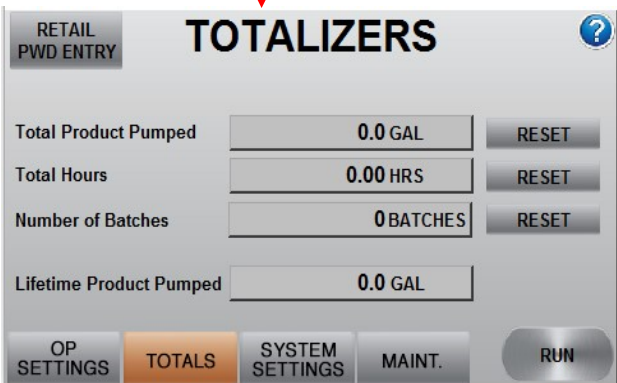
Flow Rate shows rate of product being pumped in GPM.



The **START DELAY** is used to delay the start of a batch by the number of seconds you enter.

The RELAY OUTPUT MUST BE ENABLED on the fixed rate SureBatch.

BATCH RESUME allows for the ability to stop a batch in the middle of pumping and then resume it at a later time. If DISABLED, any time the unit stops, a new complete batch will be pumped when started again. If Batch Resume is ENABLED, and a batch is started and then stopped, the batch will then finish from where it left off when it is restarted.



TOTAL PRODUCT PUMPED is a resettable totalizer to get a combined total of several batches.

TOTAL HOURS is resettable total of hours the SureBatch has been run.

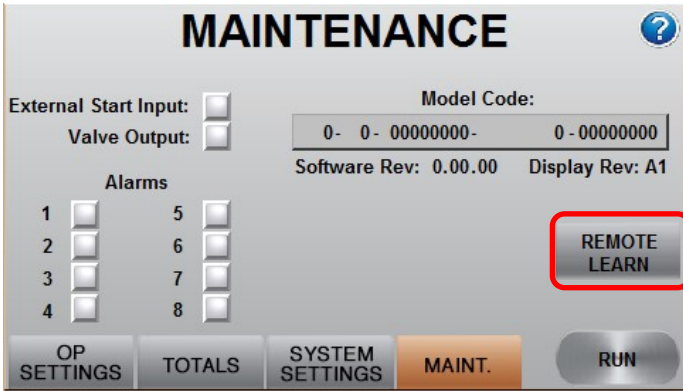
NUMBER OF BATCHES is resettable total of batches completed.

LIFETIME PRODUCT PUMPED is a non resettable totalizer that counts the total pumped by the SureBatch.

For fixed rate SureBatch set the parameters to:

Flowmeter (GPM):	.13 to 2.6	.3 to 5
Pulses Per Gal:	3000	3000
Update Speed:	10	10
Units:	Gallons	Gallons

Maintenance



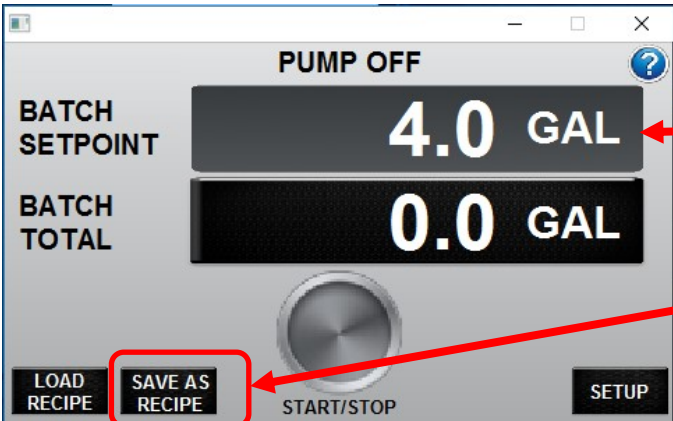
The maintenance screen has indicators and model and software info to use for troubleshooting.

REMOTE LEARN is used to program a new wireless remote control if not working.

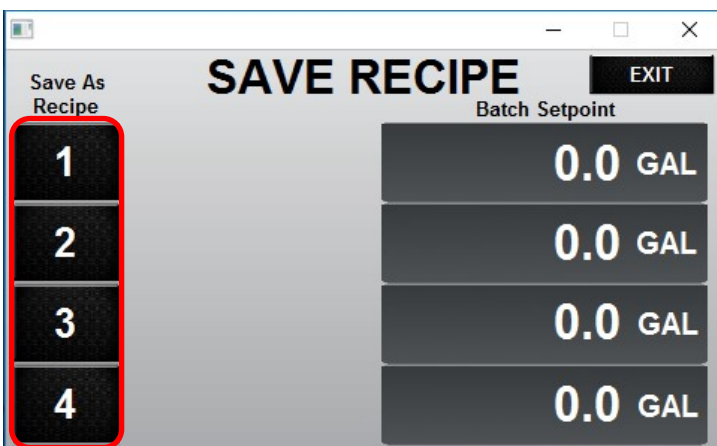
1. Press the REMOTE LEARN button, and the blue Mode light will start flashing.
2. Hold down the STOP button on the remote until the blue mode light goes solid. This will take about 30 seconds.
3. Release the button on the remote, and now your new remote is paired to the controller.

Recipe Management—Saving a Recipe

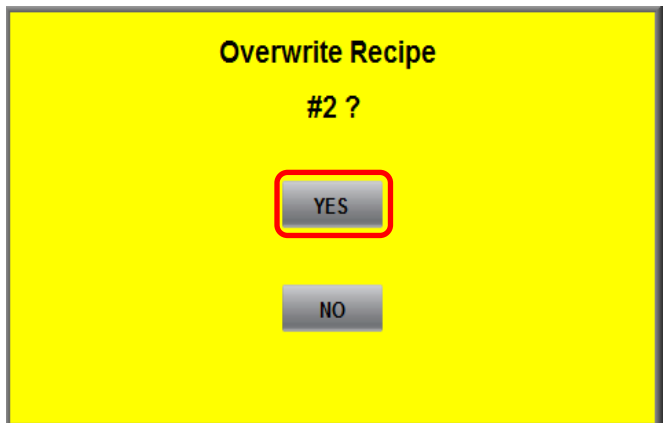
Recipes are a convenient way to store four different batch sizes in the SureBatch.



To SAVE RECIPE first set the Batch Setpoint setting. Here the batch size is 4.0 GAL. Then push SAVE AS RECIPE.

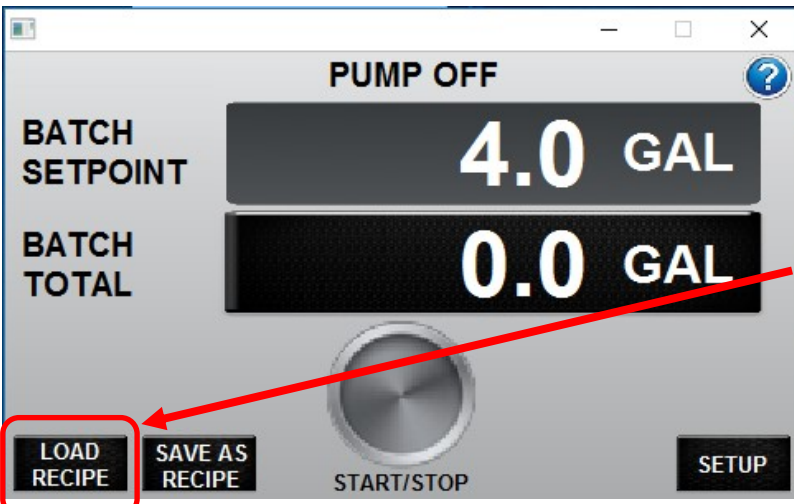


When the SAVE RECIPE screen opens, select a recipe number for this batch size by pushing on the number 1-4.

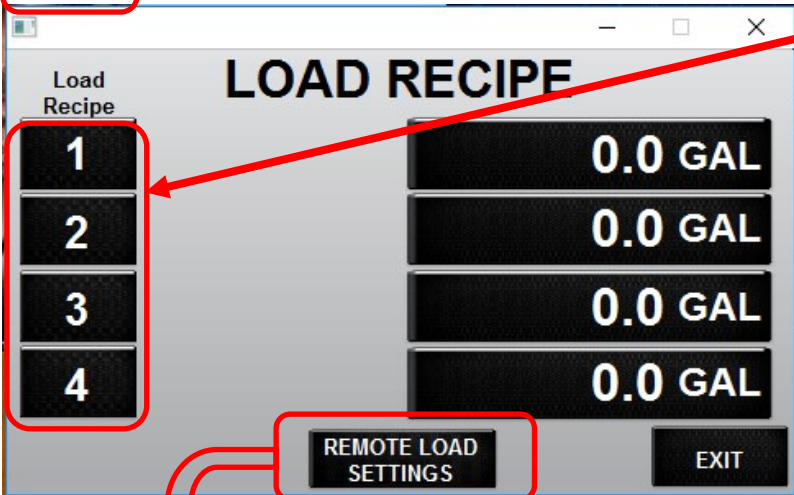


A yellow screen will pop up to confirm you want to save the recipe; select YES.

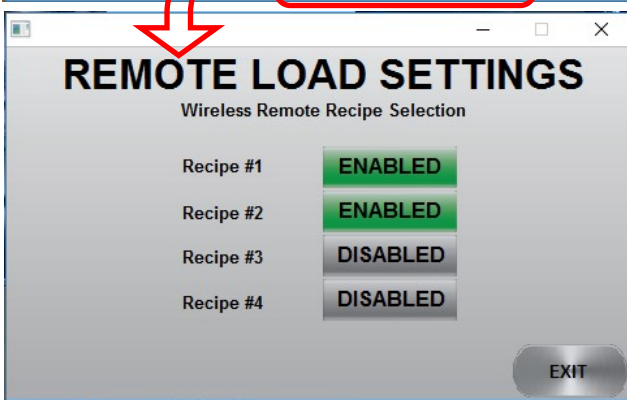
Recipe Management - Loading a Recipe



To see the saved recipes press LOAD RECIPE.



To load a recipe press the recipe number 1-4.



Press REMOTE LOAD SETTINGS to set remote control options.

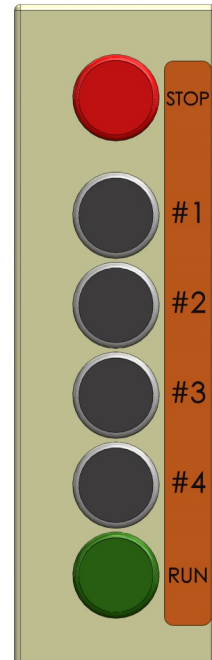
This screen sets if the #1-#4 buttons on the Push Button Remote Box or the R1-R4 Buttons on the Wireless Remote will select a recipe. As set here, #1/R1 button loads recipe 1 and starts the batch. #2/R2 does the same for recipe 2. #3/R3 and #4/R4 buttons will do nothing because they are DISABLED.

The START and STOP buttons on the remote control will always start and stop the current batch even if R1, R2, R3 and R4 are DISABLED.

Note: To run or stop a recipe batch with the Pushbutton Box, you need to press and hold the recipe button for at least 1 second to initiate button command. This is for prevention of running incorrect batch accidentally.

Note: To run or stop a recipe batch with the Pushbutton Box, you need to press and hold the recipe button for at least 1 second to initiate button command. This is for prevention of running incorrect batch accidentally.

Pushbutton Remote Box



Wireless Remote

