

396-3075Y1 QuickStart Card

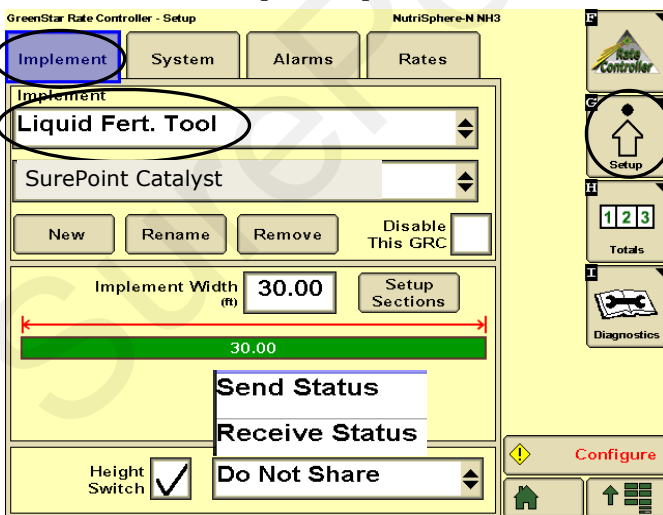


SurePoint Catalyst™ Electric Pump System for John Deere GRC

For screenshots and more complete system information and explanation, see the full manual for this system.

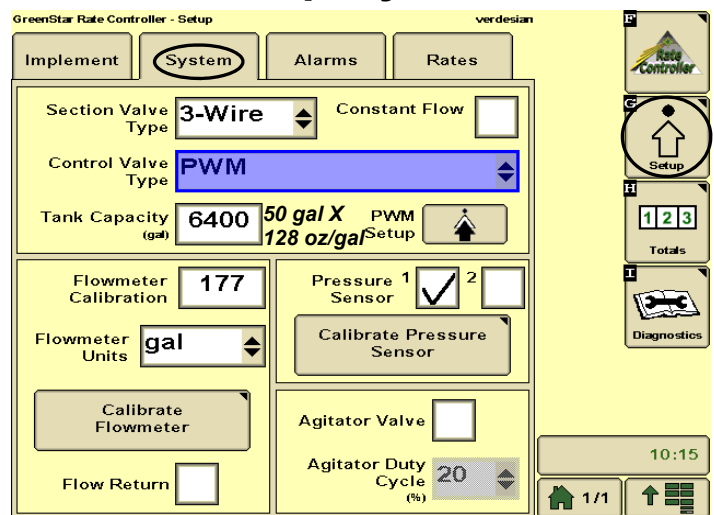
Note: The following setup assumes that the actual Rate will be entered in GPA (for example, 0.5 gpa). There will be different settings if the system is set to measure in ounces that actually appear on the screen as gallons (for example, 32 oz/acre would be set up as 32 gpa). The following screenshots show the setup settings that are typically good settings to begin with. Actual settings on your system may vary from those shown here. Adjust settings as necessary in the field to get the best operation from your system.

Setup-Implement



Set up Height Switch as appropriate for this system

Setup-System



Flowmeter Cal—177

Flowmeter Units—gal

(This will actually measure ounces for 32 oz/ac rate)

©2015-2016 SurePoint Ag Systems



PWM Setup

PWM Settings

Control Valve Calibration

Coil Frequency

High Limit

Low Limit

Pump Enable Checkbox? Note: Select if there is no hardware Pump On/Off switch installed.

Enable Pump

Change first digit of Control Valve Calibration to speed up or slow down control changes.

Calibrate Pressure Sensor

Calibrate Pressure Sensor

1. Ensure there is zero pressure at the sensor to be calibrated.
2. Enable the sections to spray.
3. Press the Calibration button for the desired type of calibration to begin test and set zero point.

50.0 mv/psi

Voltage-based Calibration

Calibrate Pressure Sensor

Voltage-based Pressure Sensor 1

1. Ensure the sensor has 12V power supply.
2. Enter the slope as reported by the implement pressure gauge manufacturer in the box below
3. Select Accept

50.0 mv/psi

Setup - Alarms

Alarms

Low Tank Level (gal) Alarm?

High Alarm (% above target rate)

Low Alarm (% below target rate)

Pressure Sensor 1

Minimum (psi) Alarm?

Maximum (psi)

Low Tank Level can be set if desired. Tank level will be measured in ounces, not gallons.

Setup - Rates

Rates

Rate 1 gal/ac

Rate 2 gal/ac

Rate 3 gal/ac

Minimum Flow Rate gal/min

Rate Smoothing %

Diagnostics-Tests-Section Test

Section Test

1. Select the section outputs to be activated.
2. Turn the Master Switch on.
3. Press the Start Button.
4. Toggle Sections on or off using the checkboxes.
Note: Turn Master Switch OFF at any time to cancel test.

1 2

Master On Status **Started**

Start

Section Test can be used for manual operation of the system. It can be used to prime the pump on startup or to rinse the system. It is good for troubleshooting.

Diagnostics-Tests-Nozzle Flow Check

Nozzle Flow Check

1. Enter test speed and rate.
2. Turn Master Switch ON.
3. Press the Start button.
Note: Turn Master Switch OFF at any time to cancel test.

Test Speed (mi/h)

Rate (gal/ac)

32.0 gal/ac

10.0 psi

11.9 gal/min

Master On Start

Use Nozzle Flow Check to see if system will lock on to a rate at a test speed. Pressure with water will be a lot lower than it will be with a heavier, thicker product.

Diagnostics—Readings—Delivery System will show details on flowmeter operation and pump speed (PWM Duty Cycle). This can be useful information for troubleshooting.

Most applications at 32 oz/lac and 30" rows will use the Purple tube.

For cold weather and/or high speed application, if the pressure generally runs over 40-45 PSI in the purple tube, consider switching to the Blue tube.



396-3075Y1 QuickStart Card

John Deere GRC and Pivot Bio 0.5 gpa

GreenStar Rate Controller - Setup Pivot Bio

Implement System Alarms Rates

Implement
Liquid Fert. Tool
Pivot Bio

New Rename Remove Disable This GRC

Implement Width (ft) 40.00 Setup Sections

10.00 10.00 10.00 10.00

Height Switch Do Not Share

1:54pm

GreenStar Rate Controller - Setup Pivot Bio

Implement System Alarms Rates

Section Valve Type 3-Wire Constant Flow

Control Valve Type PWM Close

Tank Capacity (gal) 50 PWM Setup

Flowmeter Calibration 177 Pressure 1 Sensor 2

Flowmeter Units fl oz Calibrate Pressure Sensor

Calibrate Flowmeter

Flow Return Agitator Valve

Agitator Duty Cycle (%) 10

1:54pm

PWM Settings

Control Valve Calibration 1022

Coil Frequency 150

High Limit 150

Low Limit 13

Calibrate PWM Limits

12:48pm

GreenStar Rate Controller - Setup Gen 3 Liquishift JB

Implement System Alarms Rates

Low Tank Level (gal) 10 Alarm?

High Alarm (% above target rate) 20

Low Alarm (% below target rate) 20

Pressure Sensor 1 Alarm?

Minimum (psi) 0

Maximum (psi) 60

1:51pm

GreenStar Rate Controller - Setup Gen 3 Liquishift JB

Implement System Alarms Rates

Rate 1 0.5 gal/ac

Rate 2 0.0

Rate 3 0.0

Minimum Flow Rate 0.0 gal/min

Enter minimum flow rate required to maintain spray pattern. This is also the flowrate used when manual button is pressed.

Rate Smoothing 15 %

1:52pm



SurePoint Ag Systems

