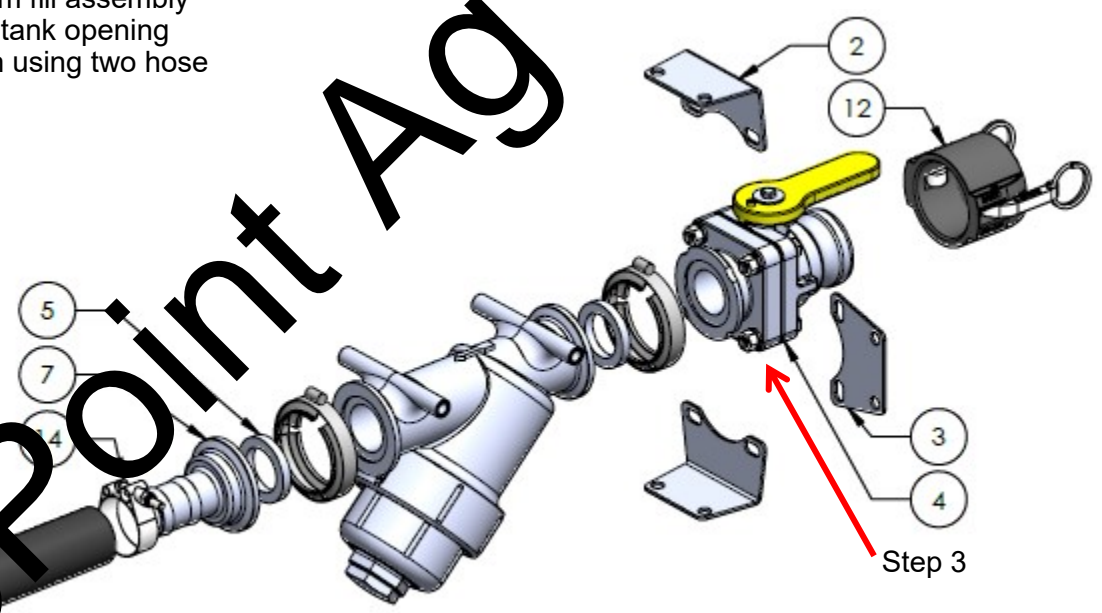
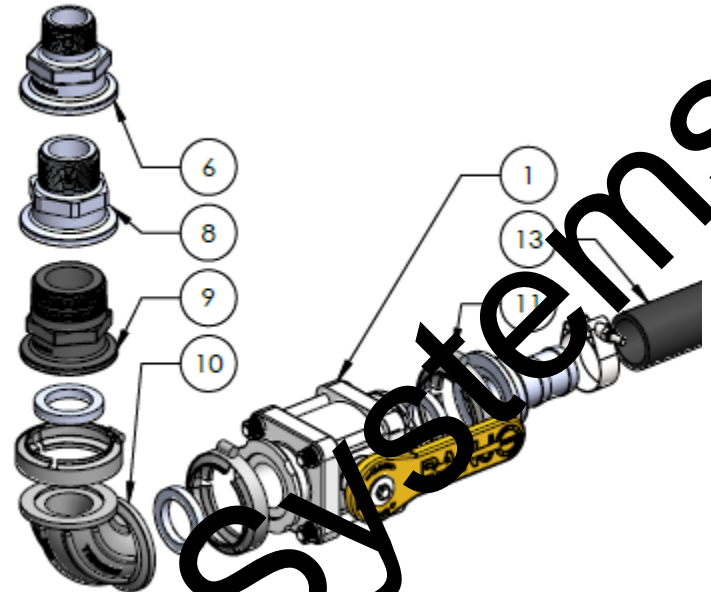




Step by Step Instructions

1. Thread 2", 1-1/2" or 1-1/4" Manifold x MPT fitting into tank opening.
2. Assemble tank valve manifold fittings as shown.
3. Remove nuts on Poly Valve (Item 4) as required to fasten mounting brackets (Item 2 or Item 3) to valve and replace nuts, tighten. (*Often, only one bracket is used to mount the fill valve. Straight and 90° bracket are shown to illustrate both options.*)
4. Using hardware kits (Item 15, 16) fasten poly valve and mounting brackets to implement.
5. Assemble fill assembly as shown.
6. Route 1-1/2" hose from fill assembly hose barb (Item 7) to tank opening hose barb and tighten using two hose clamps (Item 14).



Shown with optional strainer.