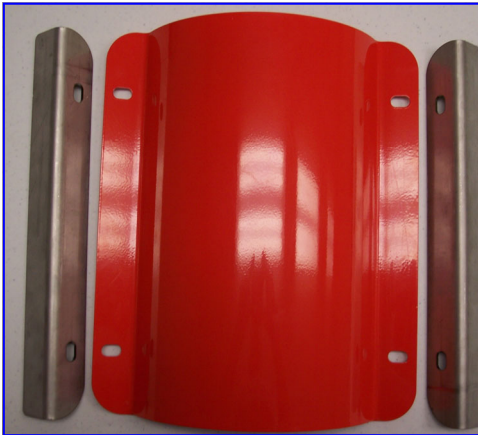
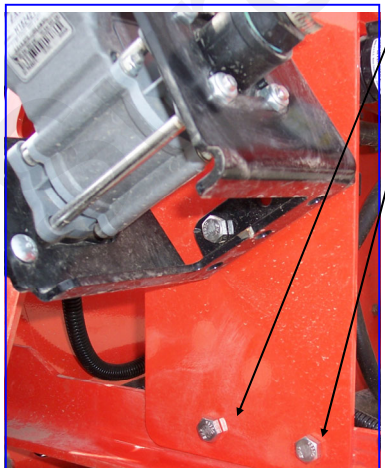
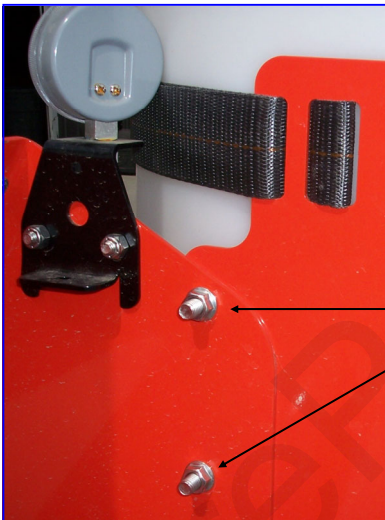
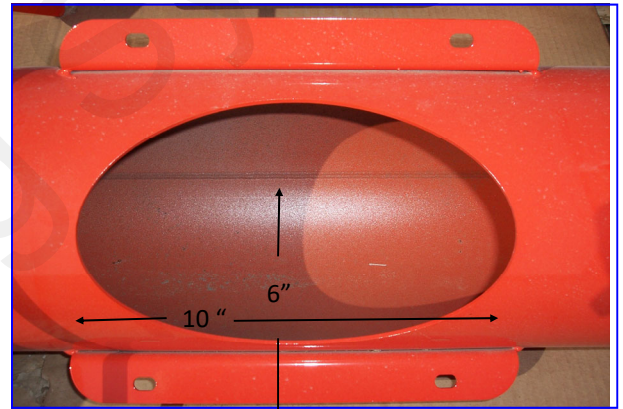


# Super Treater Auger Clean Out Cover Instructions



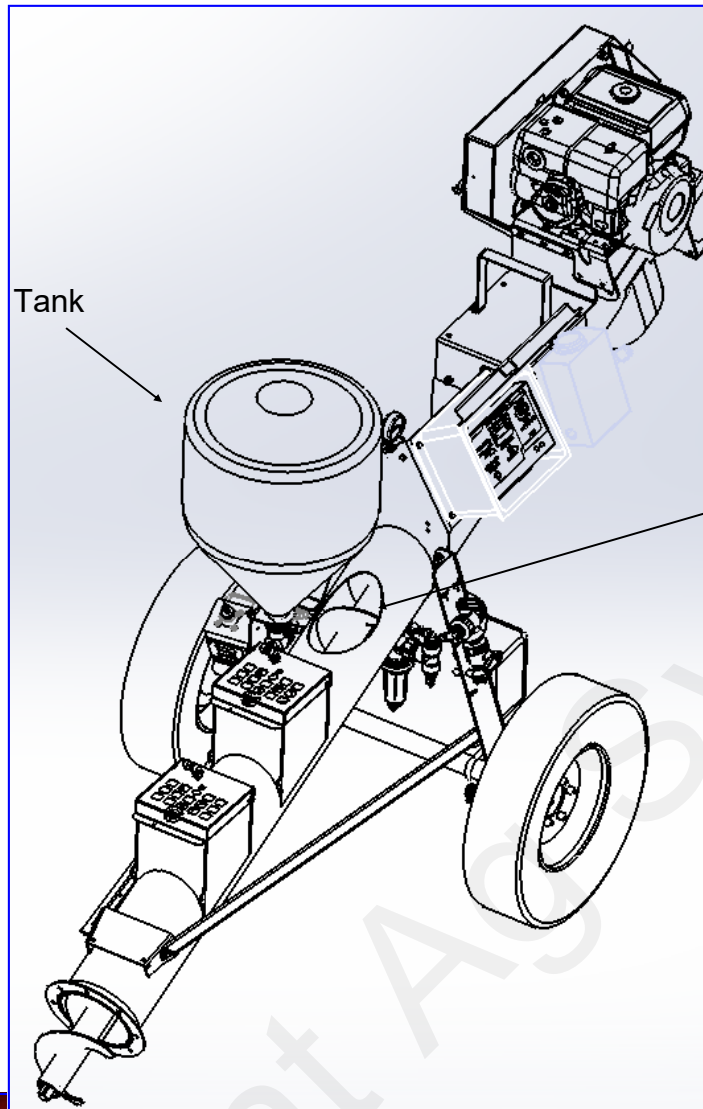
Included in this kit are 2 mounting brackets, a cleanout access cover, and 5/16" SS bolts, nuts, and washers.

The finished tube will look something like this—with a hole cut in the auger tube above the top input hopper (see drawing on page 2) and the two brackets welded to the side of the tube.



1. Disconnect the battery cables, flow meter and alternator.
2. Remove the tank by removing the 4 bolts holding the tank bracket in place. Also, remove any hoses or cables that are attached to this assembly. (See photos on left).
3. Remove the auger flighting from the tube by removing the belt shield and upper gear box.
4. Place the cutout template on the tube (see photo next page and placement instructions on template).
5. Cut the hole.
6. Position and weld the brackets in place. To position the brackets, bolt the cover to the brackets, placing 2 washers on each bolt between the cover and the bracket (see photos on Page 2). Center this assembly over the hole. The washers are to make sure the brackets are not placed too high. The washers may or may not be needed on final assembly.
7. Reassemble the unit.

To prolong the life of the flighting and to maintain top efficiency of the system, SurePoint recommends cleaning the auger system after each use.



Pictures showing cover bolted to bracket with 2 washers as spacers between cover and bracket. Do this to help with proper positioning of brackets before welding.





Template for SuperTreater Cleanout Access

Bottom of cleanout hole should be approximately 4 " above top input hopper.