



396-001820

Tank Mounting Instruction

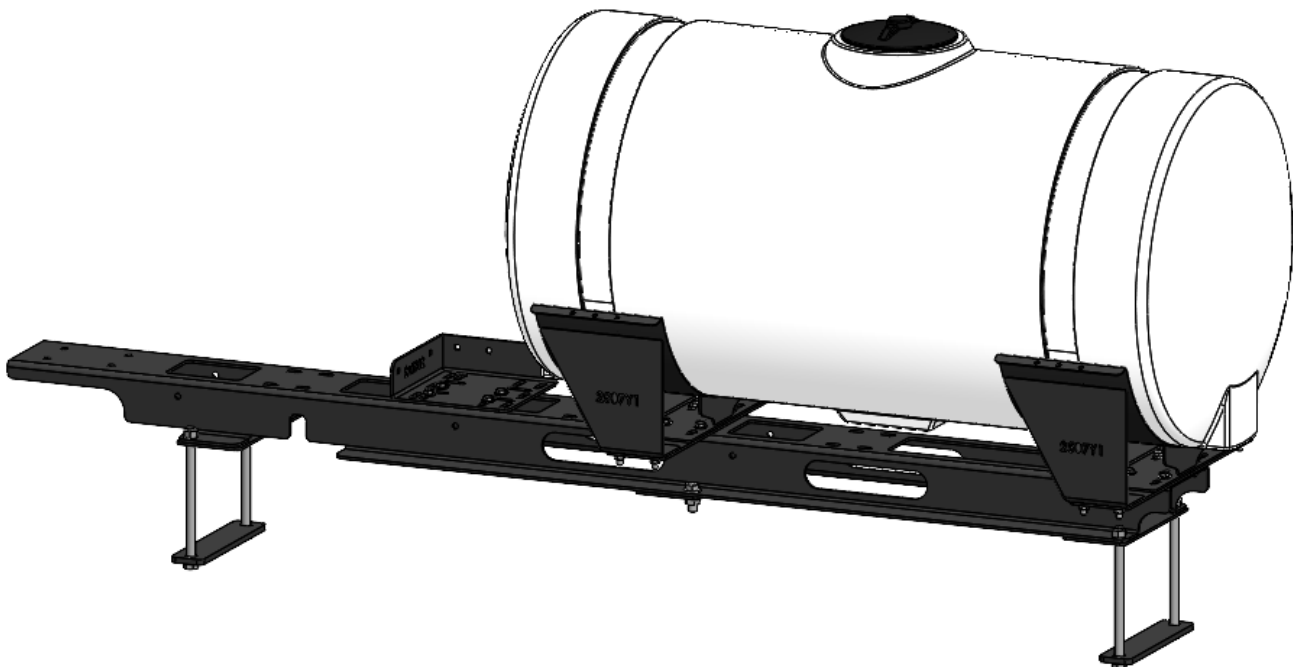
25' & 30' Drills With Markers

Single 200 Gallon Tank

Drill Manufacturer:



Kit Number: 551-02-100400





SurePoint Ag Systems Fertilizer Tank Safety and Warnings



SurePoint Ag Systems does not recommend transporting your implement with full fertilizer tanks. Doing so can result in damage to brackets and implement.



Remember to wear proper PPE (*Personal Protective Equipment*) when installing SurePoint Ag Systems fertilizer tank kits. Proper PPE includes gloves, foot and eye protection, and hearing protection.

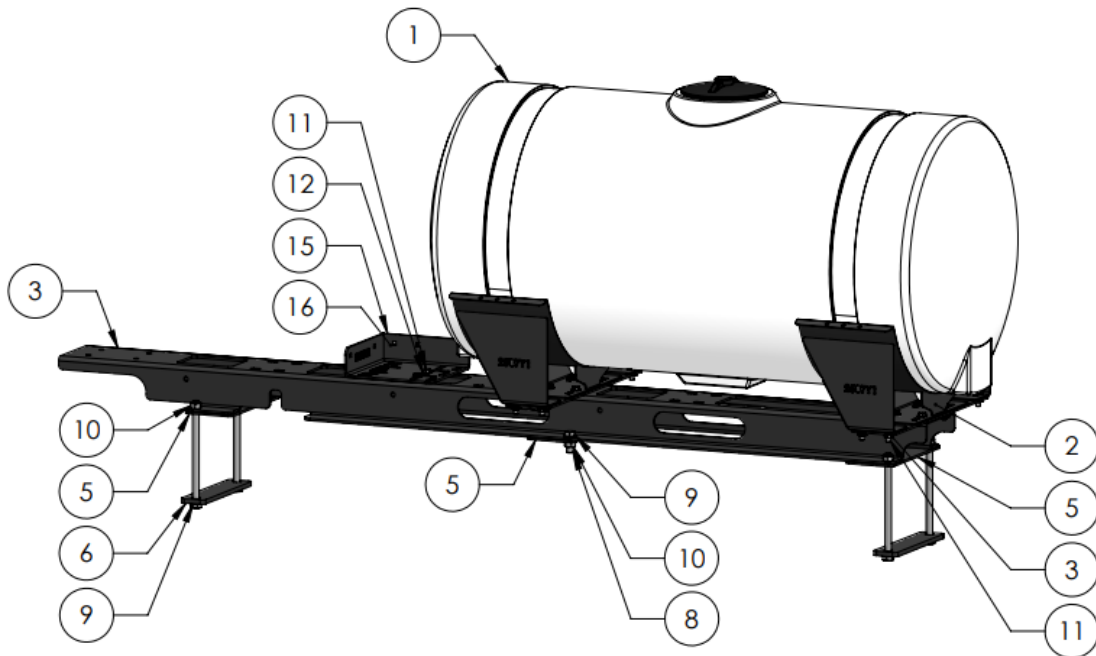


SurePoint Ag Systems fertilizer application systems require winterization when not in use. Refer to your product manual for winterization procedures.

Failure to follow the above warnings can result in personal injury, damage to your SurePoint Ag Systems products, and damage to your implement.

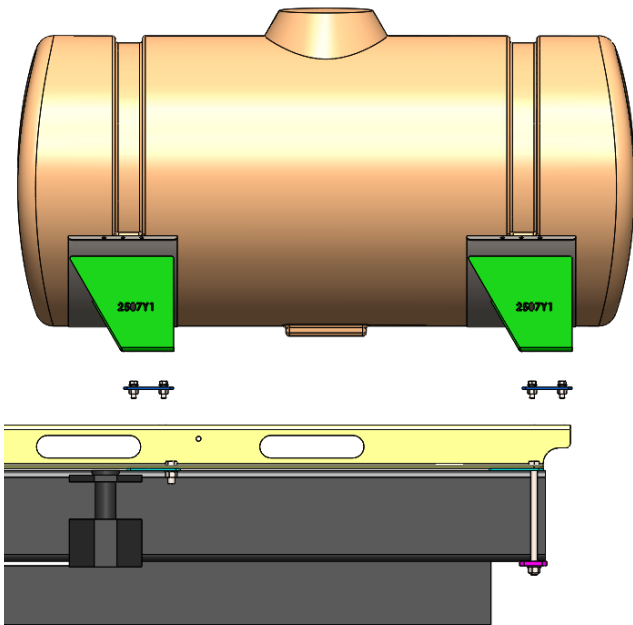
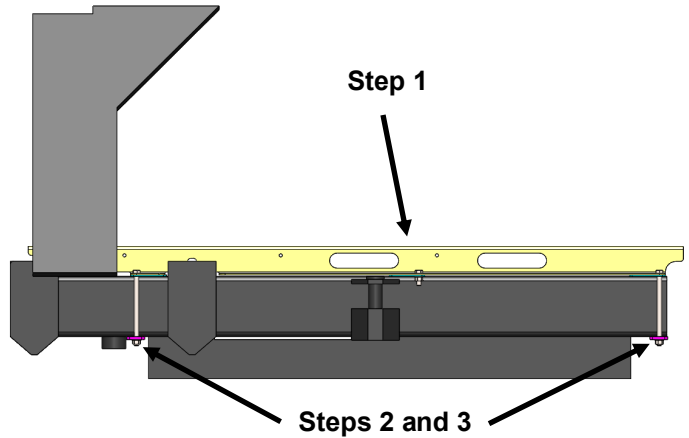
Parts List

ITEM NO.	PART NUMBER	DESCRIPTION	QTY.
1	727-02-HZ0200-32-W	Horizontal Tank - 200 Gal - White - 32" x 68"	1
2	420-2507Y1	Tank Saddle Assembly for 32" tank - Black	2
3	451-2395Y2	Attachment bracket for Crustbuster	1
4	420-2543Y1	Flat Plate Adapter for 2507Y1	2
5	451-2544Y1	Bottom Support Plate for Crustbuster 2 section	3
6	451-2545Y1	Backer Plate for Crustbuster 2 section drill - 3/4" bolts	2
7	300-121200-5	3/4" x 12" Hex Head Bolt - G5	4
8	300-120200-5	3/4" x 2" Hex Head Bolt - G5	2
9	330-12	3/4" Flat Washer	6
10	320-12	3/4" Nut	6
11	300-080108-5	1/2" x 1-1/2" Hex Head Bolt - G5	20
12	330-08	1/2" Flat Washer	20
13	323-08	1/2" Flange Nut	20
14	384-1080	Hardware Kit - Qty 4 of 3/8" Carriage Bolts and 3/8" Flange nuts	1
15	410-2057A2	Tower Mounting Bracket, 4-8" wide bar (For Tower 110 & 200)	1
16	525-2055	Tank Strap Kit, 2" Wide, 300 Gal & Under	2
17	521-00-100280	Tank Overflow Assembly Bag for 150 -300 Gallon Tanks	1
18	280-075-AG200	3/4" AG200 Bulk	10'



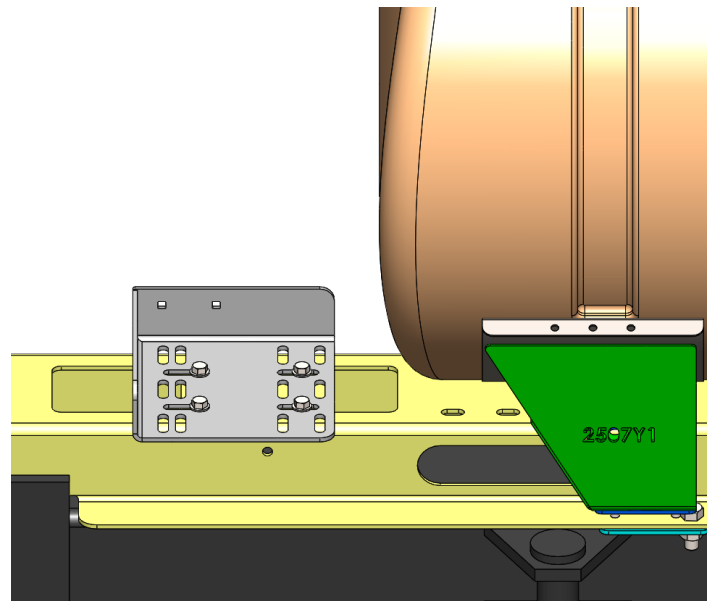
Step by Step Instructions

1. Bolt center support plate to attachment bracket using short 3/4" bolts.
2. Position attachment bracket on frame with remaining Support Plates in position under each end.
3. Bolt attachment bracket in place using backer plates and long 3/4" bolts.



4. Loosely bolt plate 2543Y1 and tank saddles to attachment bracket using 1/2" bolt, washer, and flange nuts. Also bolt plates to saddles in all four corners.
5. Position tank in saddles, and strap in place using tank straps.
6. Tighten all 1/2" bolts in place.

7. Bolt tower mounting bracket to attachment bracket in front of tank using four 1/2" bolts, washers, and flange nuts. Tower will bolt to this bracket with 3/8" carriage bolts.

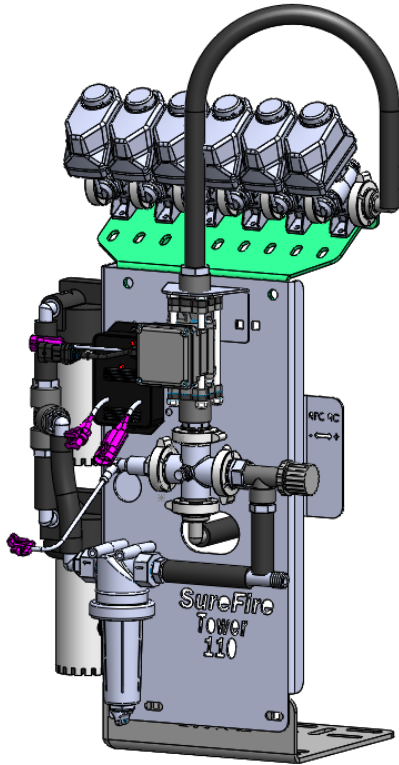




Optional/Related Items

Tower Pump Kit

Instruction sheet for this kit: 396-001420

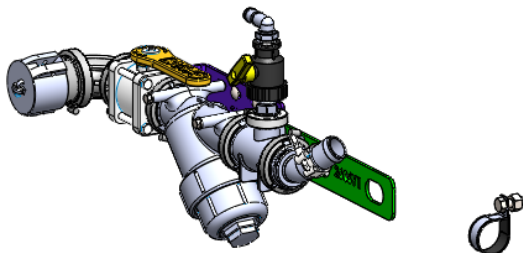


The electric pumps on the Tower are fed with 3/4" hose from the valve on the plumbing kit below.

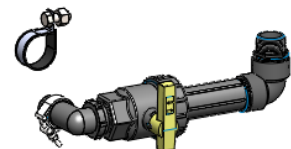
Tank Fill and Discharge Kit

Kit Number: 555-2001

Instruction sheet for this kit: 396-2607Y1



The fill kit provides a 2" male cam adapter fill point and 3/4" hose barb to feed electric pumps in the Tower above.



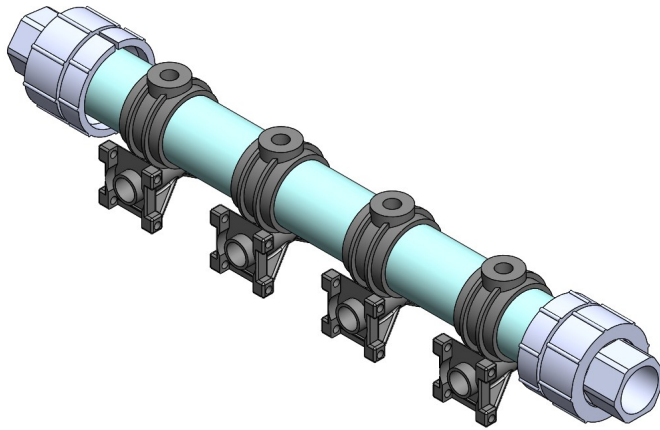


Optional/Related Items

Manifold Kits:

Instruction sheet for this kit: **396-001750**

553-02-25000:	25' 7.5" spacing
553-02-25500:	25' 10" spacing
553-02-30000:	30' 7.5" spacing
553-02-30500:	30' 10" spacing



396-001820 - CrustBuster 2 Section
Tank Mounting With Markers

Stainless Steel Tubes:

270-93CBAP (left)

-Places fertilizer before press wheel

270-CB-RD (below)

-Places fertilizer behind press wheel

