



396-4194Y1

QuickDraw Lite Product Valve Upgrade Installation Instructions



**QuickDraw Lite - 3
Automatic Valve Upgrade
Kit (From All Manual Valves)**

Kit Number: 604-300100

**QuickDraw Lite - 6
Automatic Valve Upgrade
Kit (From All Manual Valves)**

Kit Number: 604-300200

Both valve kits above are to upgrade a QuickDraw Lite that currently has all manual valves. They contain either 3 or 6 electric valves. In addition, they include the QD Lite Product Valve harness and the QD Lite E-Stop Switch and Harness.

**QuickDraw Lite - 3 Automatic
Valve Upgrade Kit (From 3
Auto / 3 Manual Valves)**

Kit Number: 604-300300

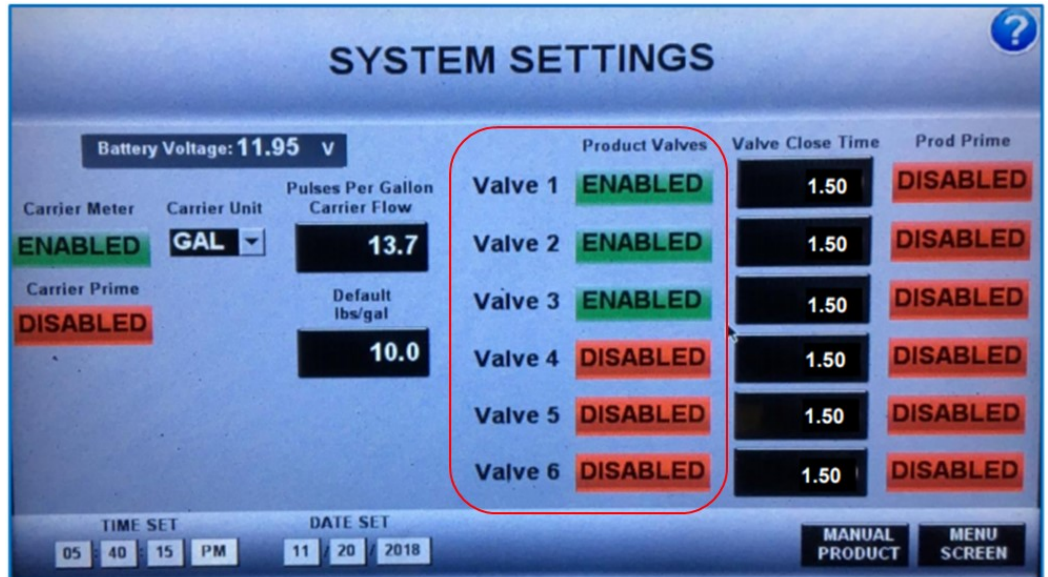
This valve kit is to add the final 3 electric valves to a QD Lite that already has #1-#3 electric valves. Therefore, the QD Lite Product Valve harness and the QD Lite E-Stop Switch and Harness are already present and are NOT included in the kit.



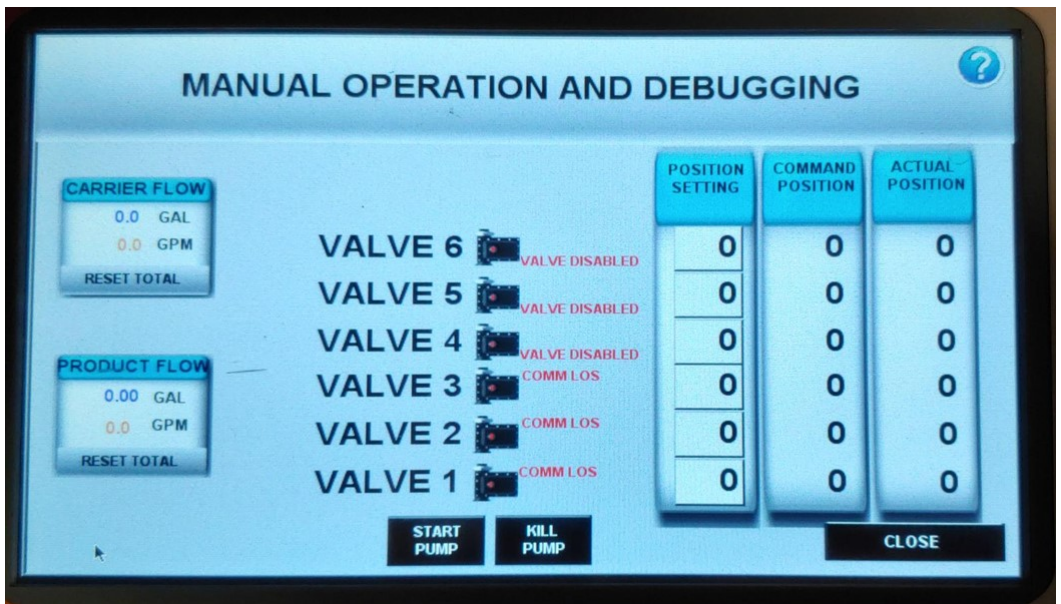
Instructions

1. Remove the manual valves that will be replaced with electric automatic valves beginning from valve #1. In a split system with 3 Auto and 3 Manual valves, valves 1-3 will be Auto and valves 4-6 will be manual.
2. Install the new electric valves on the QuickDraw Lite beginning from valve #1. New gaskets are provided in the kit if needed; re-use the original flange clamps.
3. If the QuickDraw Lite had no electric valves before, you will need to install harness 208-05-3363Y1 QD Lite CAN Valve Adapter. This harness will plug into the 4-Pin Deutsch connector labeled "Automatic Product Valves" on the main QD Lite Harness. (If you are just adding Auto valves 4-6, this harness is already installed and will not be included in the kit). **DO NOT PLUG IN THE NEW VALVES YET—SEE STEP 3.**

4. Turn on the QD Lite Controller. Go to the Menu and then Settings Screen. Enable the Auto valves you just installed on the screen shown at right. Press the red Disabled box to change it to a green Enabled box.



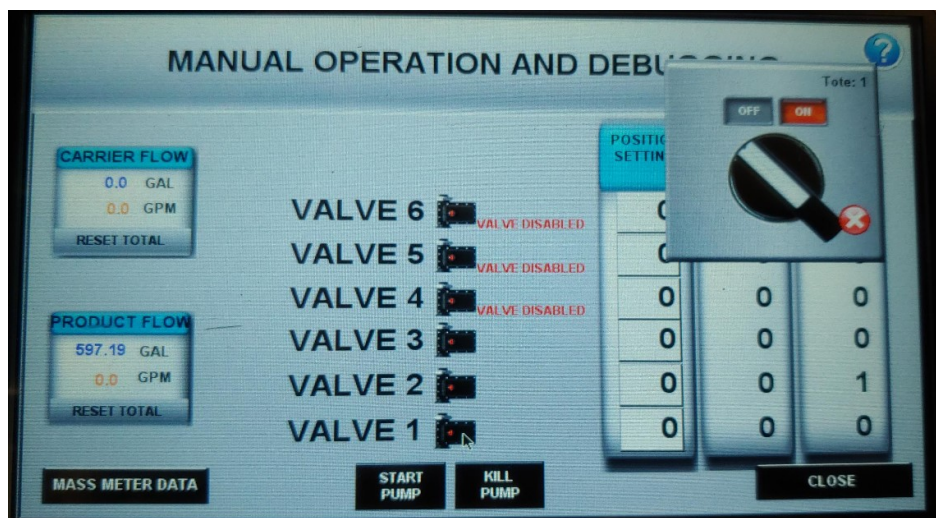
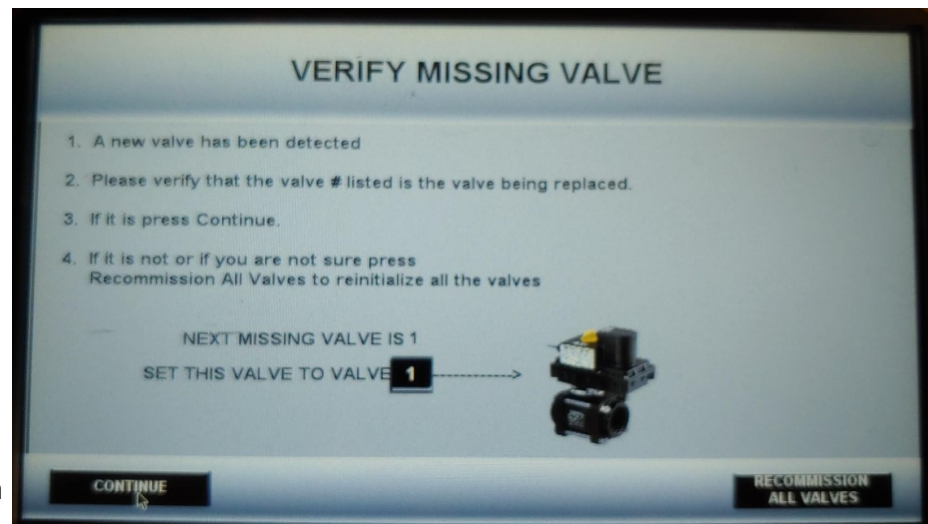
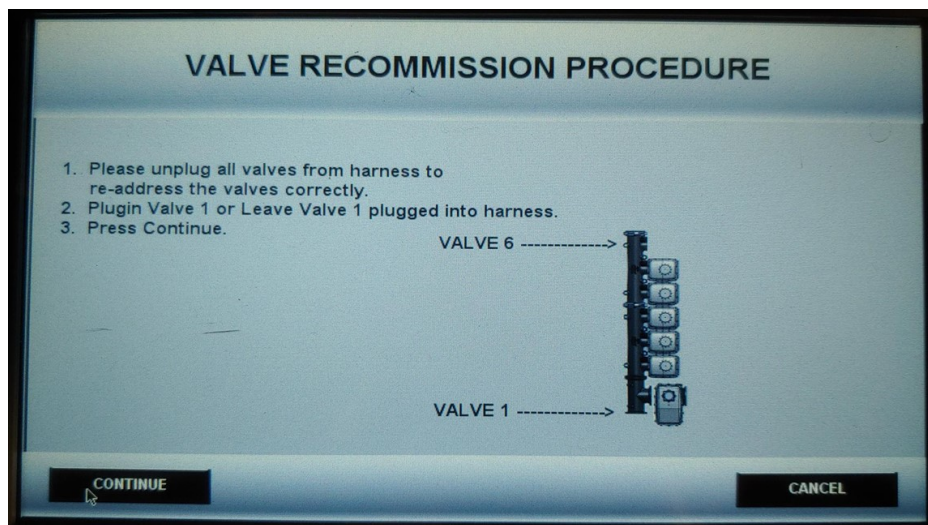
5. Now go to the Manual Operation and Debugging Screen (Menu—Run Page—Manual Controls in lower left corner). All valves you just enabled in step 4 should now say "COMM LOS" next to them. (meaning the controller is looking for that valve but it is not yet connected).





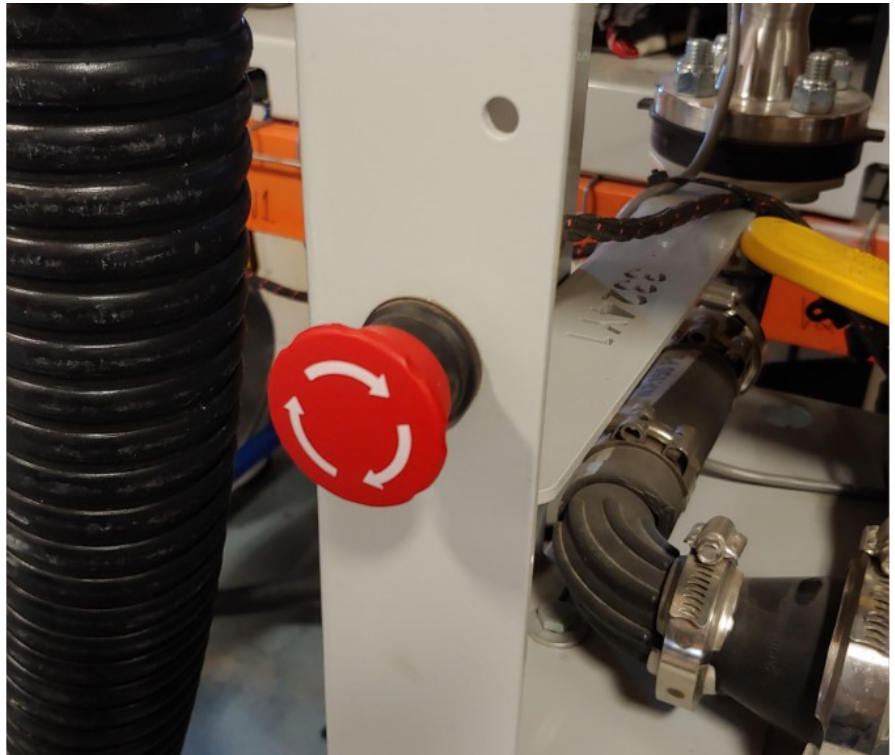
6. Plug in valve #1. the Valve Recommission Procedure Screen will pop up, push continue with just valve #1 plugged in.
7. Next the Verify Missing Valve Screen pops up and should default to set Valve #1. Press Continue Again. It will go back to the Run Screen.
8. Go to Menu—Run Page—Manual Controls and verify Valve #1 does not say “COMM LOS” next to it.
9. Now, plug in valve #2. First screen will pop up, press Continue. Next screen pops up and should default to set valve #2, press continue. Go to Manual Controls and verify “valve #2 does not say “COMM LOS”.
10. Plug in valve #3 and repeat as necessary.
11. When all new valves are plugged in YOU MUST VERIFY EACH IS ADDRESSED CORRECTLY BY MANUALLY OPENING AND CLOSING EACH VALVE. Go to Manual Controls screen and highlight valve #1. Use the switch icon that pops up to open and then close valve #1, visually verifying that the valve installed in position #1 is the one that moves. Repeat for all Auto Valves.

WARNING: FAILURE TO VERIFY VALVE ADDRESS WILL CAUSE THE OPERATOR TO ADD AN INCORRECT CHEMICAL AND/OR AMOUNT TO THE BATCH.





12. Finally, install the Emergency Stop Switch. This will close all electric valves and stop the pump (if pump stop kit installed) when the E-Stop switch is pushed.
13. Install the switch in the hole on the left side vertical support.
14. Connect the two bare wires on 208-05-3361Y1 QuickDraw Lite E-Stop Harness to the 2 switch terminals labeled 11 & 12.
15. Find the E-Stop connector on the main QD Lite wiring harness. Remove the jumper connector and plug in the E-Stop wiring harness you connected to the switch.



How it works: The QuickDraw Stop switch is normally closed. When you push the switch in, it opens and tells QD Lite to shut all valves and stop the pump. Turn the switch as instructed by the arrows to reset.